

Atlas Copco



# DrillAir Range

For ground engineering, drill & blast, water well and geothermal drilling





## Drill faster and drive down fuel costs

A DrillAir compressor is packed with technology that boosts your drilling efficiency while saving on fuel. Thanks to **AirXpert 2.0**, our performance management system, you have full control over the compressor's flow and pressure. AirXpert 2.0 is also a combination of software enhancements and the best possible components to increase your compressor's efficiency. Either flow or pressure is adjustable by the operator, the compressor automatically adjusts the other parameter.

Thanks to AirXpert 2.0, combined with the best engines on the market and our in-house designed Atlas Copco screw element, a DrillAir compressor allow you **to drill more feet per hour**.

### Better performance – Dynamic Flow Boost

Dynamic Flow Boost gives you **10% addition flow** when flushing and during drill stem refill. It means faster flushing, stem refilling and a **shorter time to finish** the drill job.

### More versatility – Atlas Copco XPR

Atlas Copco's patented XPR technology **extends the working pressure range** downwards, to 218 psi. This pressure setting helps prevent soil cavitation during overburden drilling, as well as enabling the same compressor to be used for both geothermal and foundation drilling.

### High reliability – OilXpert

Smart electronics **increase the lifetime of the DrillAir's critical components**. OilXpert is our technology to regulate the oil temperature, keeping condensate levels in check, prolonging the lifetime of the compressor oil and, ultimately, protecting the screw element against wear and tear.

## DrillAir - Putting you in control

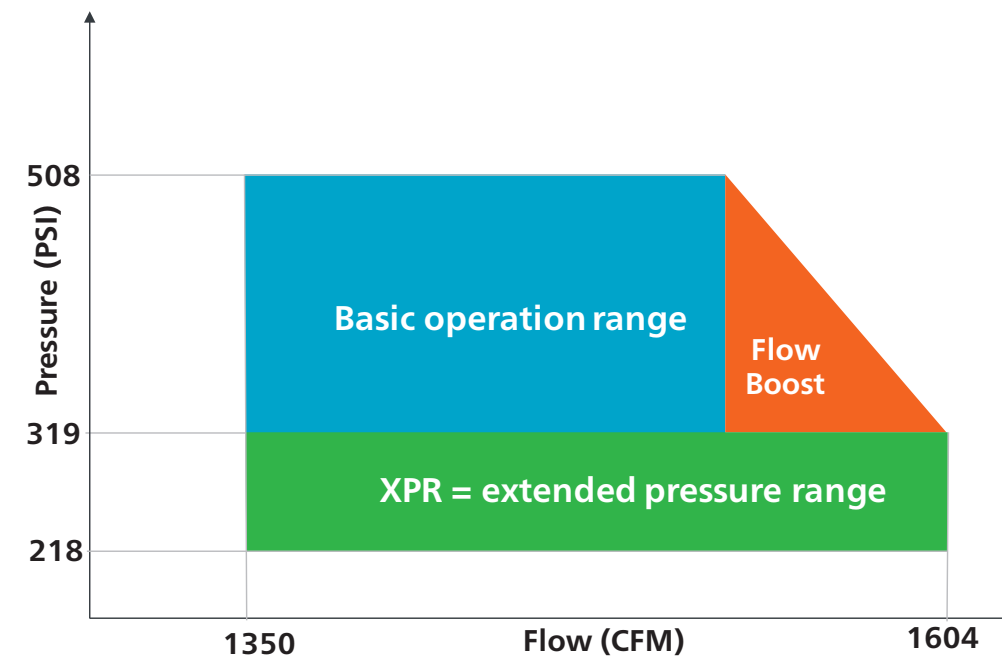
At Atlas Copco, we know the drill when it comes to compressed air, whatever the flow or pressure. A DrillAir compressor offers the perfect harmony between pressure and flow and puts you in full control of these parameters, while saving fuel.

When it comes to efficient drilling, there is no such thing as a one-size-fits-all. Depending on the depth of hole and the size of hammer, the right compressor makes all the difference. Choose the right product for your core business and get the **flexibility** to adapt to changes in drilling depth and hammer size.

A DrillAir is **easy to move, easy to operate** and **easy to service**. The new Xc4004 controller gives you a wealth of functionalities at the touch of a button and a DrillAir's service intervals stretch up to 1000 hours and those of the engine to 500 hours.

The Drillair compressor can even be **operated from a distance**. The XC4004 Smart Air controller features a mirror box, a second controller screen that allows you to operate the compressor from a distance.

## A wide range pressure and flow range increases utilization rate while fuel levels remain low.



REMOTE  
CONTROLLING  
FROM THE APPLICATION

FUEL  
EFFICIENT

LOW  
TOTAL COST  
OF OWNERSHIP

Xc4 SMART AIR  
CONTROLLER

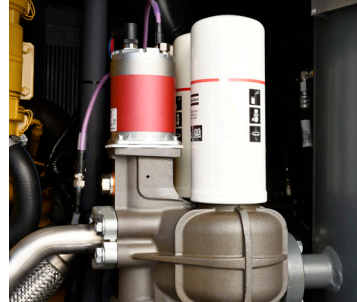
# A Drillair compressor made for your requirements

EASY TO USE 

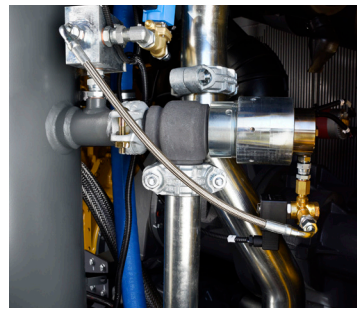
WIDE PRESSURE RANGE 

EASY TO MANOUVER & TRANSPORT 

EASY TO SERVICE 



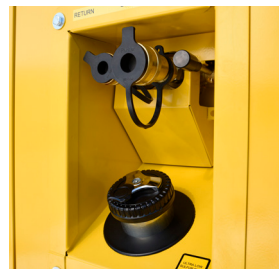
**1 Extend the lifetime of your equipment**  
The new OilXpert prevents condensation in the oil system, extending the lifetime of the bearings and element. The OilXpert application is CANbus controlled.



**2 Maximum versatility**  
The versatile XRVS 1550 has a pressure band from 218 up to 508 PSI, making it suitable for a wide range of applications. This versatility is possible thanks to the patented variable minimum pressure valve and XPR technology, allowing the working pressure to drop to 218 PSI.



**3 Safety First**  
The battery cutoff switch and external emergency stop provides additional safety.



**4 Uninterrupted performance**  
The XRVS 1550 is easy to refuel thanks to the external fuel connection so you can enjoy uninterrupted operation. The XRVS 1550 also has no DEF.



**5 Easy to move**  
Loading and unloading the Drillair compressor is easy thanks to the forklift slots.



**Maximum uptime** **9**  
Service downtime is decreased due to the new vessel design. All connectors and hoses are on the side of the vessel, enabling easy oil separator change and eliminating the potential risk of incorrect connector installation. In addition oil levels can quickly be checked through two rugged sight glasses.



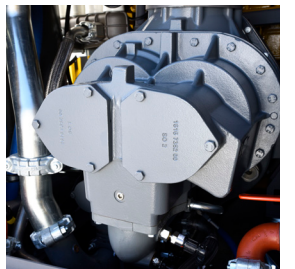
**Smart Air controller** **8**  
With the new Atlas Copco Xc4004 Controller, all the running parameters are clearly visible on one screen. This easy to use controller was designed in-house.



**Easy operation** **7**  
Heavy duty ball valve to withstand high pressure.



**Drill more feet per hour** **6**  
The new Canbus controller AirXpert 2.0 regulation system increases reliability. This patented compressor management system brings some unique features like Dynamic Flow Boost, Flow Control and XPR; making this compressor best in its class. The DrillAir compressor is packed with technology that boosts your drilling efficiency while saving on fuel.








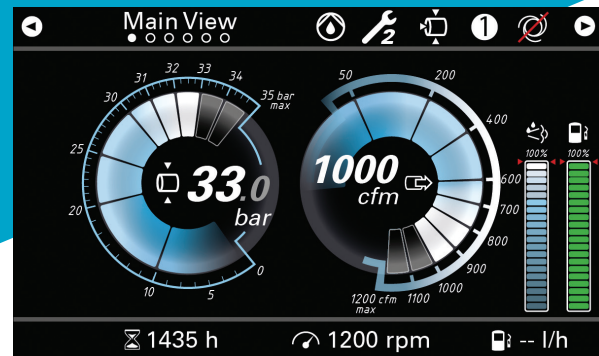
# Stop compressing air – start controlling it!

The Smart Air Xc4004 controller features the latest innovations. We believe a controller should put you in complete control, while being intuitive, and most importantly easy to use and navigate.

Smart controls also protect your investment: improve your efficiency while decreasing the operating costs of your equipment through advanced insights.

Advanced features:

-  Smart user interface with key parameters at first sight.
-  Mirror application for remote control.
-  Audible, clear warning system for any deviations.
-  Robust design which resists water and dust (IP67 rated).
-  Takes efficiency, control and connectivity to the next level.



## Easy to use interface

- 7 inch anti-glare LED screen.
- Simultaneous view of pressure and flow increase control on the output flow required by your application.
- Visible fuel and DEF levels as well as running hours avoid unnecessary downtime.
- Personalised interaction through metrics and language settings.

## Powerful insights increase uptime

- Easy access to trends of 15 parameters. (histogram)
- Increase uptime through preventive maintenance.



## Save time through remote controlling

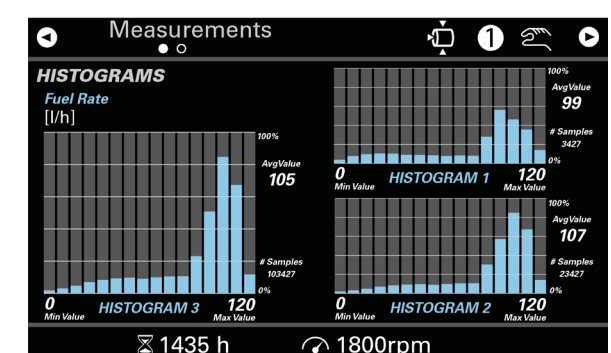
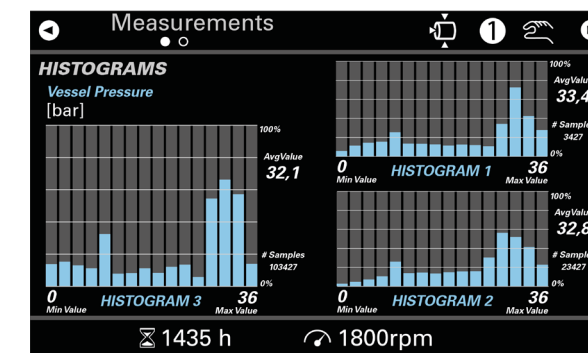
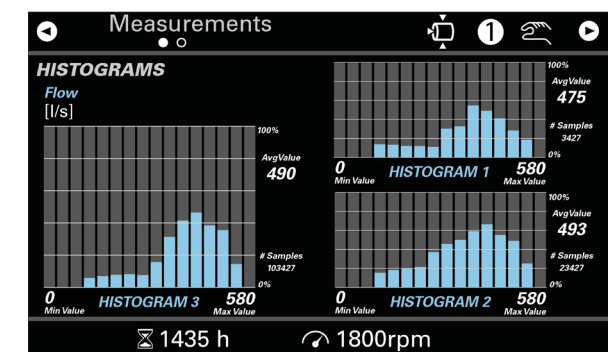
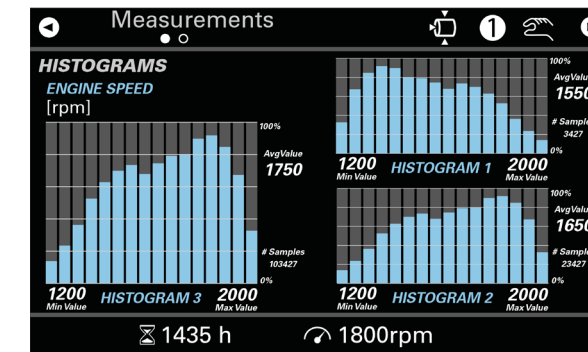
- Mirror application: control feed air compressor through second controller at point of use.
- All machine parameters remotely adjustable: auto load/unload, dynamic flow boost, multi pressure/flow settings, emergency stop...
- Hard wired or RRC radio remote connection.

## Technical data

Model		V21	XRVS 1000	XRVS 1550
Nominal flow at max working pressure	cfm	758 - 725	1136 - 910	1604 - 1350
Normal effective working pressure range	psi	232 - 362	218 - 508	218 - 508
Flow in Dynamic flow boost	cfm	-	1136	1604
AirXpert 2.0		Yes	Yes	Yes
XPR		-	218 PSI	218 psi
Fuel consumption at 100%	g/h	13	22	30.5
Engine make		Scania	Caterpillar	Caterpillar
Engine power	HP	311	475	775
Emission compliance		T4F	T4F	T4F
DEF tank capacity	US Gal	18.5	9.1	no DEF
Dimensions trailer mounted (L x W x H)	inches	157.5 x 82.7 x 86.6	235 x 90.7 x 102.7	235 x 90.7 x 102.7
Fuel tank capacity	GAL	158.5	236	240
Weight (trailer mounted)	lb	14400	17540	19225

## Powerful histograms increase uptime

- Easy access to trends of 15 parameters. (histogram)
- Increase uptime through preventive maintenance.



# Power Technique Solutions Portfolio

Atlas Copco's Power Technique Business Area has a forward-thinking philosophy. For us, creating customer value is all about anticipating and exceeding your future needs – while never compromising our environmental principles. Looking ahead and staying ahead is the only way we can ensure we are your long term partner.

## Air compressors

### Ready to go



- 110-250 cfm
- 58-150 psi

### Versatility



- 400-900 cfm
  - 58-200 psi
- \*Diesel and electric options available

### Productivity partner



- 950-1800 cfm
  - 100-508 psi
- \*1000-5000 psi with Boosters

## Generators

### Portable



- 1.6-12 kVA

### Mobile



- 25-1200\* kVA

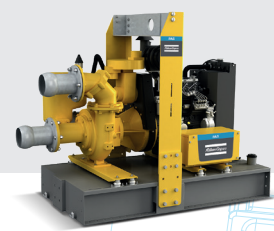
## Dewatering pumps

### Electric submersible



- up to 6,100 g/min

### Centrifugal diesel driven



- up to 6,155 g/min

## Light towers

### Metal halide



### LED



Photos and illustrations contained herein might depict products with optional and/or extra components which are not included with the standard version of the product and, therefore, are not included in a purchase of such product unless the customer specifically purchases such optional/extra components. We reserve the right to change the specifications and design of products described in this literature without notice. Not all products are available in all markets.