



# **DEWATERING PUMP SOLUTIONS**

Pneumatic pumps

---

*Atlas Copco*

---



## **PUMP UP YOUR BUSINESS**

A pneumatic pump is a great choice when failure is not an option. They're easy to use, safe and can handle almost anything you throw at them.

When you are in construction, mining or process industry you know the value of having gear that works in all conditions. There are times when tools just aren't allowed to fail. Pumping both clean and contaminated fluids from a worksite is that kind of operation.

Gear must be able to withstand rough handling in hazardous environments. And they need to work even when fluids contain solids, mud and flammable substances. And most important of all, the gear has to protect the user.

The DIP centrifugal pumps and DOP diaphragm pumps are designed to handle almost in any environment with a minimum of maintenance. They were made for businesses and operations where failure is not an option.

# THE POWER OF PNEUMATICS

In wet, rough environments pneumatics is the safest solution for pumping both contaminated and flammable solutions. Here's why pneumatic pumps rule.

## GET A GRIP ON PNEUMATIC PUMPING



### SAFE IN ALL ENVIRONMENTS

The pumps have no electrical components that can cause sparks. And thanks to pneumatic power, there are neither risks of oil leaks nor any need for flammable fuels. Unlike many electrical pumps, pneumatics is easy to install in damp environments.



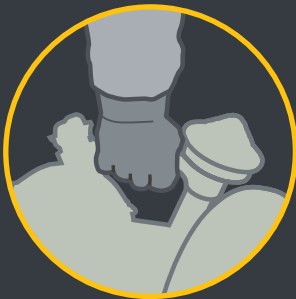
### ROBUST TECHNOLOGY

Pneumatic powered operation gives you a dirt- and damp resistant pump that can handle impure fluids and large particles. Our pumps can handle temperatures of up to 100° C! The standard industry norm is 40° C.



### FORGET ABOUT OVERLOADING

With electrical pumps there are numerous ways the driving motor can be overloaded. With a pneumatic pump you are totally safe.



### LIGHT LIFTING

A pneumatic pump has a high power to weight ratio. That makes it easy for you to carry around a lot of power. Nimble design means you can use it in confined spaces.



### SIMPLE MEANS SAFE

Keeping it simple is often the hardest in a design process. But it pays off. Simple means few moving parts that need maintenance. You get more uptime and simple handling.



### PLUG & PLAY

You need few people to get set up. Once you have attached the hoses you're good to go!

# DIP Centrifugal pumps For clean low viscosity fluids

## ROUGH

The DIP centrifugal pumps can be made to suit several operations. With a simple change of impeller and intake ring you can adjust to the desired capacity and head. That means you get a three-in-one solution.

The DIP is designed to handle relatively clean low-viscosity liquids such as water and cooling fluids. If you need to pump flammable liquids, go for the DOP-pump.

### Large grip

It's got a great grip, which makes it easy to carry around.

### Safe air intake

The strainer prevents contaminants from entering the pump.

### Submersible action

The DIP is submersible with the optional non-return valve. Alternatively you can connect a hose to keep the air outlet above surface.



### Power to weight

Compact design and a high-output pneumatic motor give the DIP pumps high capacity in relation to petrol and electric motors of the same weight.

### Schhhhh!

Attach the optional silencer to improve working conditions.

### Stainless protection

The stainless steel impeller is resistant to both corrosion and many chemicals.

### Leak-free

A specially designed rotating mechanical seal prevents leakage.



DIP centrifugal pumps			DIP 25	DIP 35	DIP 65
Max. head	m		25	35	59
Max. flow	l/min		1,680	1,320	660
Max. flow	m <sup>3</sup> /h		100.8	79.2	39.6
Max. air requirements	l/s		70	70	70
Weight	kg		23	23	23
Dimensions: L x W x H	mm		235 x 288 x 435	235 x 288 x 435	235 x 288 x 435
Connection thread <sup>1</sup>	Fluid outlet	in	G 2 1/2	G 2 1/2	G 2 1/2
	Air inlet	in	G 3/4	G 3/4	G 3/4
	Air outlet	in	G 1 1/2	G 1 1/2	G 1 1/2
Part number			8492 0103 20 <sup>2</sup>	8492 0103 38 <sup>3</sup>	8492 0106 19 <sup>4</sup>

Full dimension details are available in the product's Safety and Operating Instructions (Part number: 9800 0958 90). Available at [www.acprintshop.com](http://www.acprintshop.com).  
Data at 6 bar (90 psi). 1) According to ISO 228/1. Remark Ordering number when fitted with US universal claw couplings: 2) 8492 0103 21, 3) 8492 0103 39, 4) 8492 0106 20.

# DOP Diaphragm pumps For polluted high viscosity fluids

## ROUGHEST

When the going gets tough, the tough get a DOP diaphragm pump. They are designed for the most polluted and viscous media, as well as highly abrasive and flammable fluids.

The DOP 15N is an all-round pump for construction, mining and industrial applications. The diaphragm and valve flaps are made of nitrile rubber.

DOP 15F – specially designed for the process industry, with fluorine (viton) rubber diaphragm and valve flaps. Not for use in explosive environments.

### Easy to handle

It only takes one person to handle the DOP.

### Submersible

The built in non-return valve makes the pump submersible and independent of orientation. Add a silencer for lower noise levels.

### Safe intake

The air intake with strainer prevents contaminants from entering the pump via the air.

SAFER OPERATIONS

### Self-priming

The DOP is self-filling, which means less unnecessary handling in rough environments.

### Lift more

The DOP can be connected in series to increase the lifting capacity, or "head".

### Reach the corners

The Pivoting intake coupling together with an optional suction hose help you reach liquids in tight corners.

**Less stress**  
A pivoting connection pipe means reduced stress on the hose.



### Stable operations

The strainer at the base prevents particles larger than 30 mm from passing through the pump.

GREAT FOR BUSINESS

DOP diaphragm pumps		DOP 15N	DOP 15F
Max. head	m	59	59
Max. flow	l/min	420	420
Max. flow	m <sup>3</sup> /h	25.2	25.2
Max. air requirements	l/s	34	34
Weight	kg	31	31
Dimensions: L x W x H	mm	390 x 330 x 585	390 x 330 x 585
Connection thread <sup>1</sup>	Fluid outlet	G 2 1/2	G 2 1/2
	Air inlet	G 3/4	G 3/4
Part number		8492 0101 48 <sup>2</sup>	8492 0101 63

Full dimension details are available in the product's Safety and Operating Instructions (Part number: 9800 0968 90). Available at [www.acprintshop.com](http://www.acprintshop.com) Data at 6 bar (90 psi). 1) According to ISO 228/1. Remark Ordering number when fitted with US universal claw couplings: 2) 8492 0101 49.



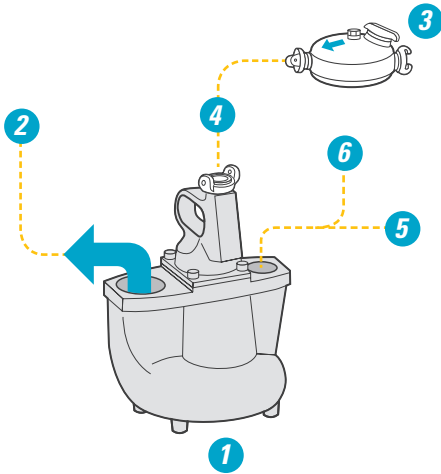
Atlas Copco

# TOOLS FOR EVERY APPLICATION - DIP DOP PUMPS

## DIP 25, 35 & 65

Pos	Equipment	Incl. in kit, qty			Part-number
		25	35	65	
	DIP 25 kit				8492 0103 53
	DIP 35 kit				8492 0103 61
	DIP 65 kit				8492 0106 27
1	Pump	1	1	1	
2	Outlet hose 76 mm x 25 m incl. fittings	1	-	-	3330 0034 91
2	Outlet hose 63 mm x 32 m incl. fittings	-	1	2	4950 0191 90
2	Reinforced outlet hose 63 mm x 25 m incl. fittings. Coupling for connecting hose to pump	-	-	-	4950 0196 90 + 3330 0040 00
3	Lubricator CLG 30 for synthetic oil (Air-oil) or mineral oil*	1	1	1	8202 5102 39
4	Connection parts for lubricator CLG 30. Valve, air hose 20 mm x 3 m incl. fittings*	-	-	-	9030 0500 90
5	Non-return valve with pipe. Thread G 1 1/2 A	1	1	1	3330 0032 91
6	Silencer for dry air, incl. connection parts	-	-	-	3330 0033 91
6	Silencer for damp air, incl. connection parts	-	-	-	3330 0072 91

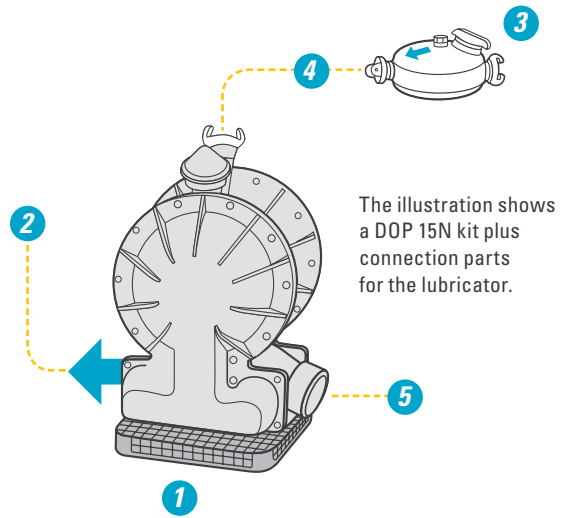
\*with European standard claw couplings.



## DOP 15N & 15F

Pos	Equipment	Incl. in kit, qty	Part-number
1	Pump	1	
2	Outlet hose 63 mm x 32 m incl. fittings.	1	4950 0191 90
2	Reinforced outlet hose 63 mm x 25 m incl. fittings	-	4950 0196 90
3	Lubricator CLG 30 for synthetic oil (Air-oil) or mineral oil.	1	8202 5102 39
4	Connection parts for lubricator CLG 30. Valve, air hose 20 mm x 3 m incl. fittings*	-	9030 0500 90
5	Reinforced spiral suction hose 63 mm x 5 m incl. fittings and strainer*	-	3330 0069 90

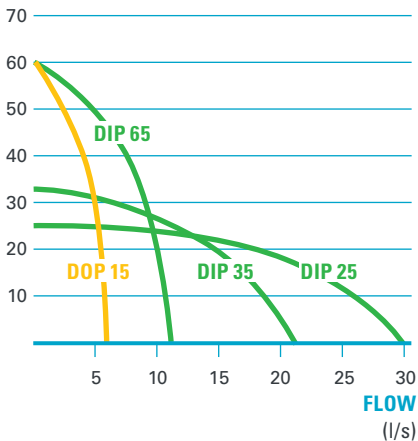
\* with European standard claw couplings.



## FLOW CHART FOR DIP AND DOP PUMPS AT 6 BAR

### HEAD

(m)



The pumps can also be delivered as complete pump systems. In addition, there are a number of optional equipments.



## ***COMMITTED TO SUSTAINABLE PRODUCTIVITY***

We stand by our responsibilities towards our customers,  
towards the environment and the people around us.  
We make performance stand the test of time.  
This is what we call – Sustainable Productivity.

[www.atlascopco.com](http://www.atlascopco.com)

The Atlas Copco logo consists of the company name in a white, italicized serif font, centered between two horizontal white bars of equal length.

*Atlas Copco*