

# ***HOISTS AND TROLLEYS***

***Atlas Copco***

# Introduction – Air Hoists and Trolleys

## Explosion-proof operation and stepless control for a smoother safer lift

*Atlas Copco air hoists and trolleys are the industry benchmark for fast, precise and reliable lifting of heavy loads – even in cramped and sometimes hostile industrial environments.*



*Compact and lightweight, they are easy to control, survive rough handling and provide heavyweight performance.*

### **EXPLOSION PROOF FOR SAFE OPERATION**

Our air hoists and trolleys are ideal for lift applications in hazardous environments. All are certified Explosion-proof, to stringent European standards, in compliance with the EU ATEX Directive. Available in five sizes, they offer lift capacities from 250 kg to 5 tons. Hoists are certified to level Ex II 2 GD ck T5 IIC T100°C and trolleys are certified to Ex II 2 GD c T5 IIB T100°C.

### **SIMPLE INSTALLATION**

The trolleys are easy to install. The wheels are designed so that the trolley is equally suitable on both parallel and tapered I-beam section beams. The distance between the wheels is easily adjusted to suit the beam width by turning the suspension yoke.



## **Selection guide**

### **AIR HOIST SELECTION PROGRAM**

The fastest way to choose correct hoists and accessories is by using the Windows based computer program available on our website.

To order your hoist or trolley with accessories factory fitted, simply list all items required and add the

**Ordering No. 8990 0001 00**

**EXAMPLE:** To order a 500 kg hoist with motor driven trolley, four button five-metre long pendant control and a load chain for a ten-metre lift, send the following:

Order to be sent	Comments
1 x 8451 1540 28	LLA500 ATEX Hoist block
11 x 4310 2293 00	Load chain for hoist = Required height of lift + 0.5 m, (see technical data for LLA Hoists)
1 x 8451 1520 14	TLT1000-M-N Motor driven trolley
1 x 4310 2263 90	4 button handle + hoist actuator
5 x 4310 2310 96	Hose set for 4 button pendant control
1 x 8990 0001 00	Instruction to assemble above items

- **Precise and stepless speed control** – Through effective stepless control with excellent creep characteristics the LLA air hoists are fast to use over the entire speed range.
- **Heavy duty performance** – These air hoists can continually operate at maximum load with frequent start and stop cycles without risk of damage.
- **Elimination of load sink** – The patented brake mechanism eliminates load-sink when starting lifting, and automatically holds the load if the air supply fails.
- **Compact size** – The small dimensions make the LLA hoists easy to install, even in the most restricted space. Also the low weight means the hoists can easily be moved for maintenance or relocation purposes.
- **Lubrication free.**



Model	Max lifting capacity kg	Lifting speed at full load		Chain drops qty	Weight excl chain		Chain weight		Required chain-length metre	Air consumption		Hose size		Air inlet thread BSP	Ordering No.
		m/min	ft/min		kg	lb	kg/m	lb/ft		l/s	cfm	mm	in		
LLA250-L ATEX <sup>a</sup>	250	18.6	61.0	1	12.7	28.0	0.9	0.6	Lifting height + 0.5	37	78	12.5	1/2	1/2	8451 1550 17
LLA500-L ATEX <sup>a</sup>	500	12.6	41.3	1	12.7	28.0	0.9	0.6	Lifting height + 0.5	38	81	12.5	1/2	1/2	8451 1550 25
LLA500-L-W ATEX <sup>c</sup>	500	12.6	41.3	1	12.7	28.0	0.9	0.6	Lifting height + 0.5	38	81	12.5	1/2	1/2	8451 1540 93
LLA980-L ATEX <sup>a</sup>	980	6.3	20.7	2	14.5	32.0	0.9	0.6	2 x Lifting height + 0.5	38	81	12.5	1/2	1/2	8451 1560 15
LLA1000-L ATEX <sup>b</sup>	1000	6.3	20.7	2	15.0	33.0	0.9	0.6	2 x Lifting height + 0.5	38	81	12.5	1/2	1/2	8451 1550 32
LLA2500-L ATEX <sup>b</sup>	2500	3.2	10.5	1	42.5	93.7	2.9	1.9	Lifting height + 0.6	40	85	12.5	1/2	1/2	8451 1550 41
LLA5000-L ATEX <sup>b</sup>	5000	1.6	5.2	2	65.5	144.4	2.9	1.9	2 x Lifting height + 0.9	40	85	12.5	1/2	1/2	8451 1550 58

<sup>a</sup> Without overload protection device.

<sup>b</sup> Overload protection device included.

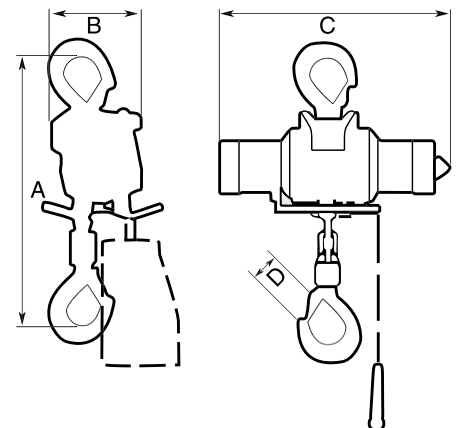
<sup>c</sup> Unpainted, corrosion resistant.

Performance figures are at 6.3 bar working pressure.

**NOTE:** Load chain and control chain must be ordered separately.

## Dimensions

Model	A		B		C		D	
	mm	in	mm	in	mm	in	mm	in
LLA250-L ATEX	377	14.8	122	4.8	390	15.4	29	1.1
LLA500-L ATEX	377	14.8	122	4.8	390	15.4	29	1.1
LLA980-L ATEX	445	17.5	122	4.8	390	15.4	29	1.1
LLA1000-L ATEX	495	19.4	122	4.8	390	15.4	29	1.1
LLA2500-L ATEX	575	22.6	212	8.3	546	21.5	50	2.0
LLA5000-L ATEX	785	30.9	249	9.8	546	21.5	60	2.4



Atlas Copco trolleys are available in 3 sizes, for maximum loads of 1, 3 and 5 tonnes. All models can be offered with air motor drive. The 1 tonne trolley includes motor without pedant control. The 3 and 5 tonne includes handle for control chain (control chain must be ordered separately). The 1 and 3 tonne trolleys are also available in manual versions.

- Lubrication free.



Model	Max capacity kg	Max speed with full load		Air consumption		Beam width		Curve radius min		Weight		Ordering No.
		m/min	ft/min	l/s	cfm	mm	in	mm	in	kg	lb	
<b>Manual</b>												
TLT1000-H-N	1000	-	-	-	-	50-160	2-6.3	1250	50	9.4	21	8451 1520 06
TLT1000-H-W	1000	-	-	-	-	161-280	6.3-11	1250	50	11	24	8451 1520 63
TLT3000-H-N	3000	-	-	-	-	74-180	2.9-7.1	2200	86.6	32	70	8451 1520 55
TLT3000-H-W	3000	-	-	-	-	181-300	7.1-11.8	2200	86.6	34	75	8451 1520 89
<b>Motor driven</b>												
TLT1000-M-N <sup>a</sup>	1000	14	45.9	4	8.5	50-160	2-6.3	1250	50	11	24	8451 1520 14
TLT1000-M-W <sup>a</sup>	1000	14	45.9	4	8.5	161-280	6.3-11	1250	50	12	27	8451 1520 71
TLT3000-M-N <sup>b</sup>	3000	17.8	58.4	42	89	74-180	2.9-7.1	2200	86.6	48	106	8451 1520 30
TLT3000-M-W <sup>b</sup>	3000	17.8	58.4	42	89	181-300	7.1-11.8	2200	86.6	52	114	8451 1520 97
TLT5000-M <sup>b</sup>	5000	16.2	53.1	42	89	181-300	7.1-11.8	2500	98.4	74	163	8451 1520 48

<sup>a</sup> Pendant control must be ordered separately.

<sup>b</sup> Includes handle for control chain. Control chain must be ordered separately.

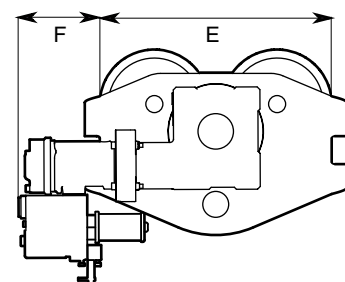
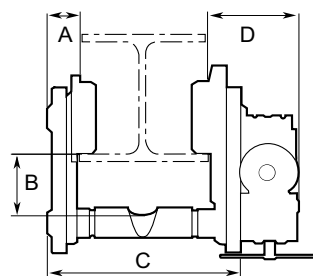
Performance figures are at 6.3 bar working pressure.

Motor-driven trolleys have 1/2" BSP air connection.

12.5 mm (1/2") hose size is recommended for TLT1000-MN/MW, 20 mm for TLT3000-MN/MW and TLT5000-M.

## Dimensions

Model	A		B		C		D		E		F	
	mm	in	mm	in	mm	in	mm	in	mm	in	mm	in
<b>Manual</b>												
TLT1000-H-N	26	1.1	52	2.0	212	8.3	-	-	264	10.4	-	-
TLT1000-H-W	26	1.1	52	2.0	Beam width + 57	Beam width + 2.3	-	-	264	10.4	-	-
TLT3000-H-N	35	1.4	78	3.1	262	10.3	-	-	384	15.2	-	-
TLT3000-H-W	35	1.4	78	3.1	Beam width + 89	Beam width + 3.5	-	-	384	15.2	-	-
<b>Motor driven</b>												
TLT1000-M-N	24	1.0	52	2.0	212	8.3	225	8.9	264	10.4	-	-
TLT1000-M-W	24	1.0	52	2.0	Beam width + 57	Beam width + 2.3	225	8.9	264	10.4	-	-
TLT3000-M-N	37	1.5	78	3.1	262	10.3	148	5.9	380	15.0	94	3.7
TLT3000-M-W	37	1.5	78	3.1	Beam width + 89	Beam width + 3.5	148	5.9	380	15.0	94	3.7
TLT5000-M	41	1.6	93	3.7	Beam width + 97	Beam width + 3.8	166	6.6	437	17.2	59	2.4



## Accessories Included

### FOR HOISTS

Wooden handle for pull chain  
Hose nipple BSP 1/2"  
Suspension hook and load hook

### FORTROLLEYS

TLT3000-MN/MW/5000-M  
Wooden handle for pull chain

## Optional Accessories

### FOR AIR HOISTS

Designation	LLA250/500/ 980/1000 ATEX Ordering No.	LLA500-L-W ATEX Ordering No.	LLA2500/ 5000 ATEX Ordering No.
Load chain, zinc plated, per m	4310 2293 00	4310 2293 00	4310 2296 00
Control chain, zinc plated, per m	4310 0748 00	4310 0748 00	4310 0748 00
<b>2 button pendant control</b>			
Handle and actuators only	4310 2261 90	4310 2261 90	4310 2262 90
Hose set per m	4310 2310 91	4310 2310 91	4310 2310 91
<b>4 button pendant control</b>			
Handle and actuators only	4310 2263 90	–	4310 2264 90
Hose set per m	4310 2310 96	–	4310 2310 95
<b>Twist rod control</b>			
Complete (1.1-2.0 m)	4310 0774 91	4310 0774 91	4310 0774 91
Extension set (1.1-1.9 m)	4310 0780 91	4310 0780 91	4310 0780 91
Articulating link	4310 0876 91	4310 0876 91	4310 0876 91
<b>Chain collectors</b>			
PVC for length of chain			
– 4 m	4310 0742 04	4310 0742 04	–
– 7 m	4310 0742 07	4310 0742 07	4310 2291 07
–12 m	4310 0742 12	4310 0742 12	–
–18 m	4310 0742 18	4310 0742 18	–
–25 m	4310 0742 25	4310 0742 25	–
<b>Chain collectors</b>			
Steel for length of chain			
–12 m	–	–	4310 2102 80
–18 m	–	–	4310 2109 80
<b>Overload protection device</b>			
LLA250 ATEX	4310 0812 83	–	–
LLA500 ATEX	4310 0812 84	4310 0812 84	–
LLA980 ATEX	4310 0812 85	–	–
LLA1000/2500/5000 ATEX	incl as standard	–	incl as standard
Safety hooks, zinc plated	4310 0739 01	4310 0739 01	–
Chain stop, zinc plated	4310 0740 91	4310 0740 91	4310 2097 91

**NOTE:** For items specified per metre, the required length should be indicated by multiplying the Ordering No. by the required length, ie. to order 12 m of chain for an LLA250 the order should be **12 x 4310 2293 00**.

When ordering load chain, follow the recommendations on chain given in the technical data for LLA hoists.

### FORTROLLEYS

Designation	TLT1000-M Ordering No.	TLT3000-M Ordering No.	TLT5000-M Ordering No.
Zinc plated control chain per m		4310 0748 00	4310 0748 00
<b>2 button pendant control</b>			
Handle and actuator only	4310 0835 92	4310 2262 91	4310 2262 91
Hose kit per m	4310 2310 97	4310 2310 98	4310 2310 98