

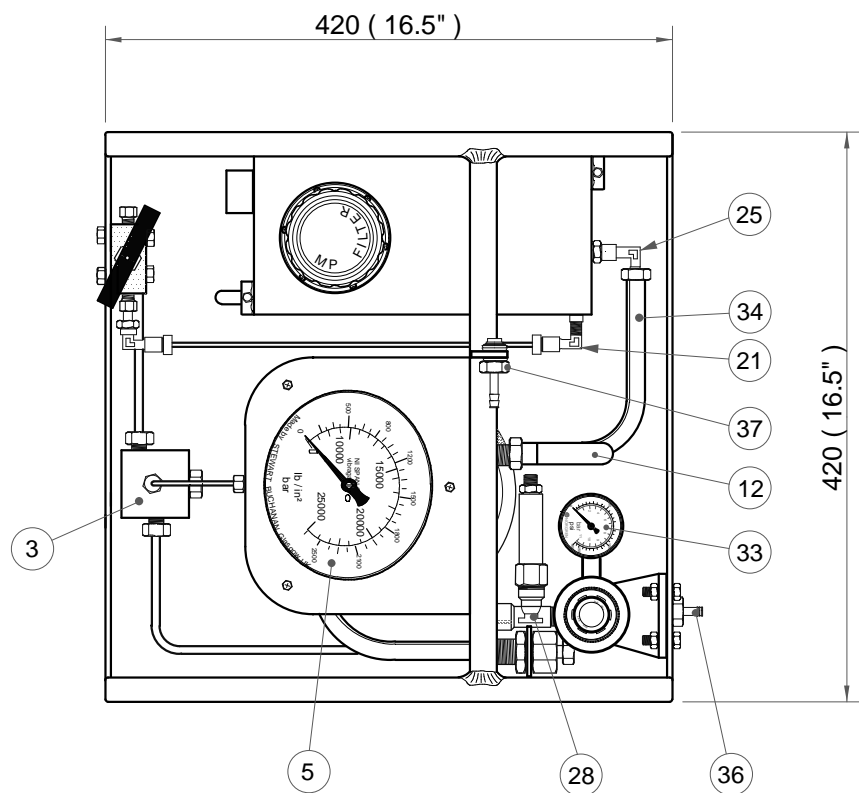
ALL DIMENSIONS IN MM

IF IN DOUBT ASK

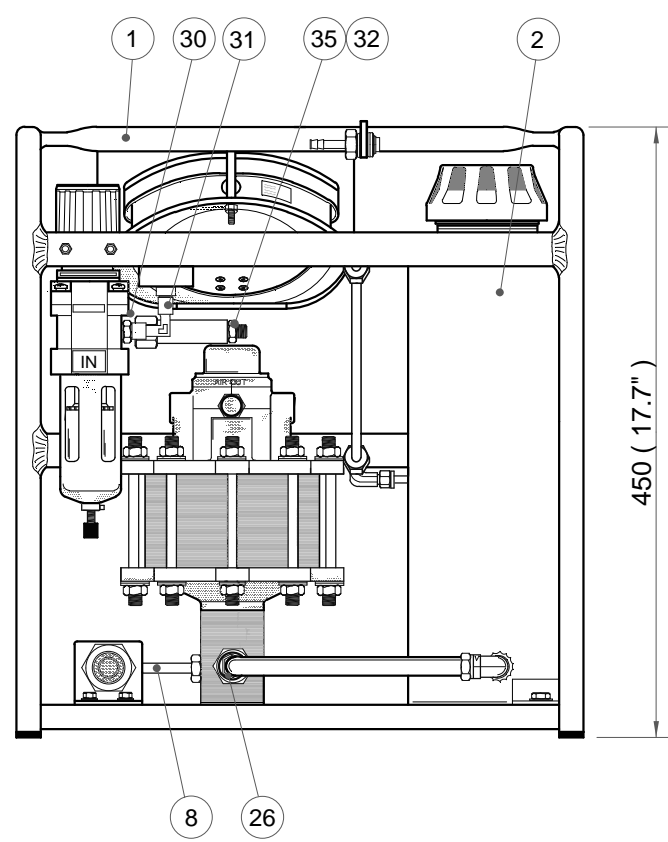
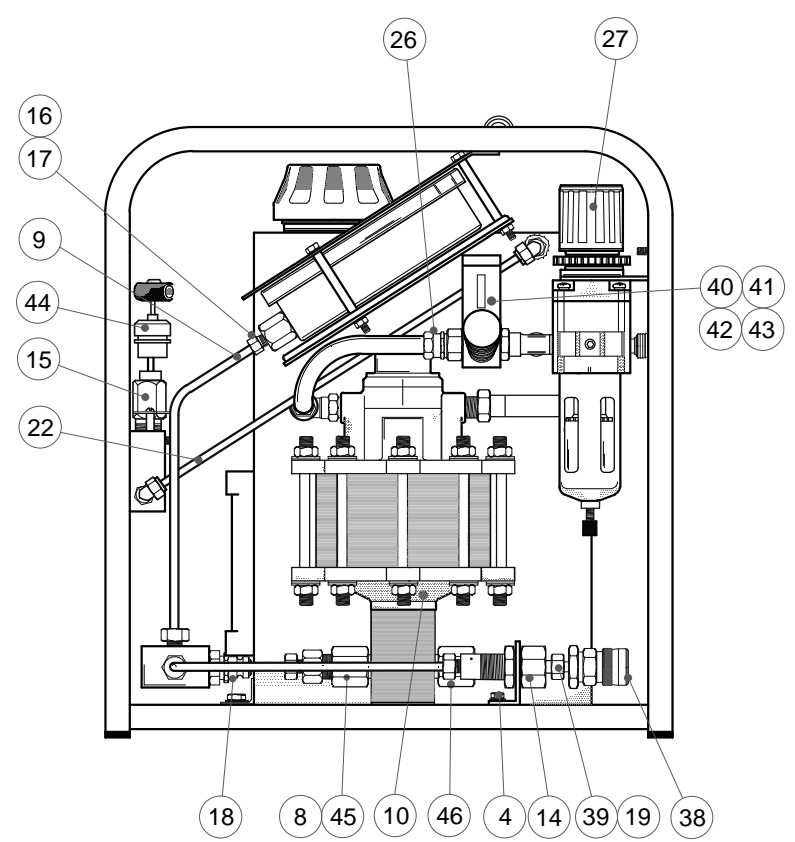
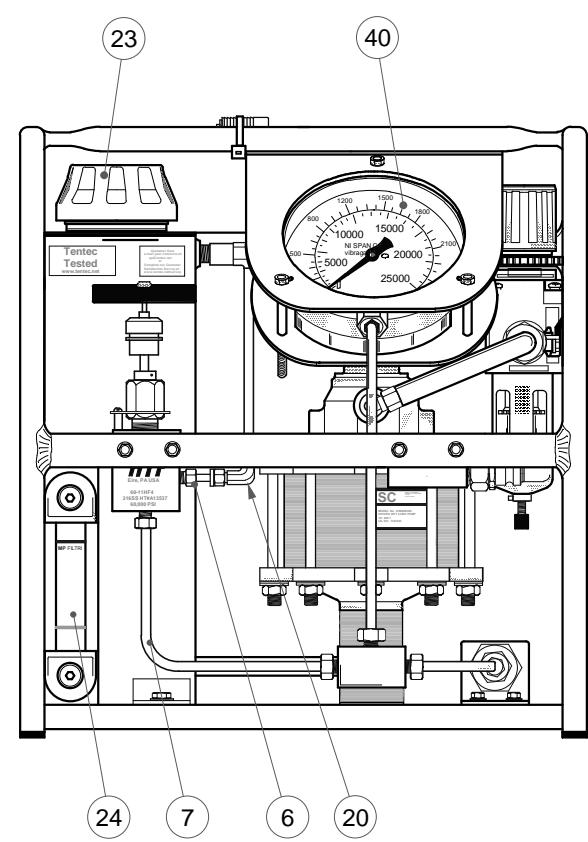
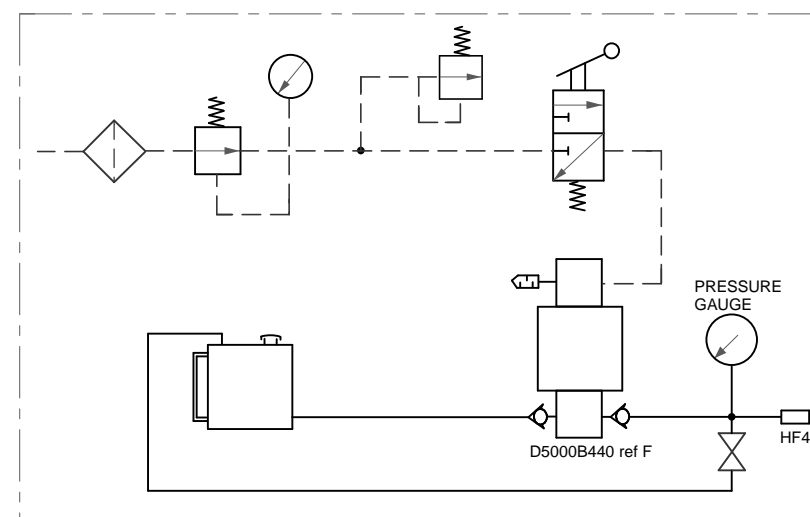
**Tentec**<sup>®</sup>  
www.tentec.net

DRAWING MODIFICATION HISTORY		
DMR No.	DATE	REV
6000	13/06/2007	B
7210	17/06/2009	C
8635	21/06/2012	D
9471	29/04/2013	E
10490	21/01/2015	F
10636	21/01/2015	G

# AIR DRIVEN HYDRAULIC PUMP FITTED WITH 0 - 25,000psi PRESSURE GAUGE



## SCHEMATIC DIAGRAM



No	DESCRIPTION	Qty	MATERIAL	TENTEC PART No.	REMARKS	PART NUMBER
46	INLET CHECK VALVE	1		HTT.6271.046		11 - 5021 S000
45	OUTLET CHECK VALVE	1		HTT.6271.045		11 - 6116 S000
44	VALVE PROTECTION CLUTCH	1		HTT.6271.044		HTT.11400.000C
43	SILENCER	1		HTT.6271.043		712 - 1/4
42	LEVER SPRING VALVE - THE VALVE BODY TO BE INVERTED 180 deg	1		HTT.6271.042		224.32.9.1/1-G1/4"-3/2
41	REDUCINGNIPPLE 1/4" BSP (M) x 1/2 BSP (M)	1		HTT.6271.041		RA012 1/4" - 1/2"
40	REDUCING ADAPTOR 15mm O/D x 1/4" BSP	1		HTT.6271.040		611 15mm (F) x 1/4" BSP (M)
39	MALE COUPLING KUTERLITE	1		HTT.6271.039		MALE 611 15mm X 3/8"
38	JOUCOMATIC F/F ELBLOW	1		HTT.6271.038		RA 021 1/8" - 1/8"
37		1		HTT.6271.037		
36	PLUG HOLLOW	1		HTT.6271.036		GF NO 291S 1/2"
35	LABEL	1		HTT.6271.035		PRESSURE RELEASE OPEN SLOWLY
34	COPPER TUBE	600m		HTT.6271.034		15mm OD
33	AIR GAUGE	1		HTT.6271.033		40mm DIA 0-160PSI/BAR
32	AIR RELIEF VALVE	1		HTT.6271.032		2550 BSP
31	FEMALE TEE 1/2 x 1/2 x 1/2	1		HTT.6271.031		LV 3420 1/2"
30	HEX NIPPLE	1		HTT.6271.030		RIV MA02 1/8"
29		1		HTT.6271.029		
28	MALE RUN TEE	1		HTT.6271.028		RA025 1/2"
27	FILTER REGULATOR	1		HTT.6271.027		AW40 -04B - X126
26	MALE COUPLING KUTERLITE	1		HTT.6271.026		611 15mm x 1/2" BSPT
25	MALE ELBOW KUTERLITE	1		HTT.6271.025		616 15mm x 1/2" BSPT
24	5" SIGHT LEVEL	1		HTT.6271.024		LAV 20 with 10mm nuts
23	FILTER BREATHER	1		HTT.6271.023		TAP 90
22	COPPER TUBE	300m		HTT.6271.022		1/4" OD
21	MALE ELBOW	1		HTT.6271.021		DLM 4-6N-B
20	ELBOW	1		HTT.6271.020		DL 4-B
19	1/4" CEJN x HN4 ADAPTOR	1		HTT.6271.019		19 950 0022
18	NIPPLE	1		HTT.6271.018		60-HM4-3.5
17	HF4 COLLAR	3		HTT.6271.017		60-2H4
16	HF4 GLAND NUT	3		HTT.6271.016		60-2HM4
15	PRESSURE RELEASE VALVE	1		HTT.6271.015		60-12HF4
14	BULKHEAD COUPLING	1		HTT.6271.014		60-21HF4-B
13	PUMP OUTLET ADAPTOR	1		HTT.6271.013		11-6117 S000
12	SILENCER	1		HTT.6271.012		346 00 409
11	PUMP	1		HTT.6271.011		D5000B440 Rev F
10	3/4" - 1/2" REDUCER	1		HTT.6271.010		GF721.910.837
9	GAUGE PIPE	1		HTT.6271.009		3301-9
8	OUTLET PIPE	1		HTT.6271.008		3301-8
7	PRESSURE RELEASE PIPE	1		HTT.6271.007		3301-7
6	VENT STANDPIPE ADAPTOR	1		HTT.6271.006		3301-6
5	LEXAN GAUGE GUARD	1		HTT.6271.005		3301-5
4	BULKHEAD BRACKET	1		HTT.6271.004		3301-4
3	OUTLET BLOCK	1		HTT.6271.003		3301-3
2	TANK ST. ST.	1		HTT.6271.002		3301-2
1	FRAME	1		HTT.6271.001		3301-1

THIS DRAWING IS CONFIDENTIAL. IT IS THE SOLE AND EXCLUSIVE PROPERTY OF TENTEC LIMITED AND IS SUBJECT TO RETURN UPON REQUEST. IT MAY NOT BE COPIED, DUPLICATED, DISCLOSED, TRANSMITTED OR COMMUNICATED TO A THIRD PARTY IN ANY MANNER, IN WHOLE OR ANY PART THEREOF, WITHOUT THE PRIOR WRITTEN CONSENT OF THE OWNER. NOR MAY IT BE USED FOR ANY PURPOSES OTHER THAN IN RELATION TO THE SINGLE CIRCUMSTANCE IN CONNECTION WITH WHICH IT HAS BEEN SUPPLIED. FOR COPYRIGHT PURPOSES THIS IS DEEMED TO APPLY EQUALLY TO THE DOCUMENT AND TO ANY DESIGNS, CALCULATIONS, RESULTS OR OTHER CONCEPTUAL MATTER DEPICTED THEREIN.

© Tentec Limited. All rights reserved.

TOTAL WEIGHT 22.5 kg

<b>TENTEC LIMITED</b>		DRAWING TITLE		DRAWING No	
ORIGINAL SCALE	GEN TOLERANCE	<b>D500</b>		<b>HTT.6271.000G</b>	
1 : 4	± 0.25mm	AIR OPERATED HYD PUMP		5L - SS - 300	
DRAWN BY	DATE	CHECKED BY	DATE		
JMG	18/03/05	DME	18/03/05		