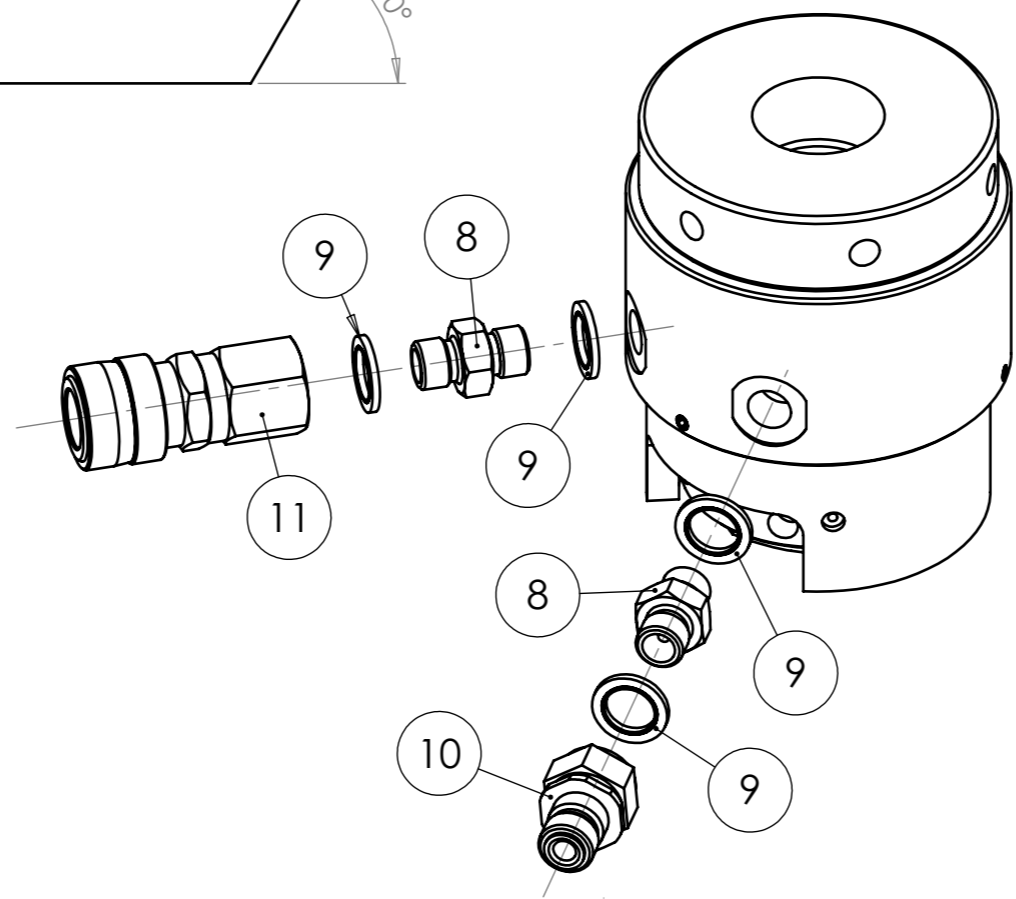


**BRIDGE FOOTPRINT**  
 SCALE 1 : 2  
 COMPRESSIVE STRESS:  
 342.41N/mm<sup>2</sup>

**PROPOSED TOOL FEATURES**  
 HYDRAULIC TENSIONER IS FITTED WITH QUICK RELEASE HYDRAULIC CONNECTIONS, TO ENABLE QUICK AND SIMPLE HOSE CONNECTION.  
 HYDRAULIC TENSIONER IS FITTED WITH A DEVICE TO DIRECT OIL AWAY FROM THE OPERATOR, SHOULD THE PISTON BE OVER-STROKED.  
 HYDRAULIC TENSIONER IS FITTED WITH HIGH QUALITY, SELF-ENERGISING SEALS. NO SEAL ADJUSTMENT IS NECESSARY.  
 HYDRAULIC TENSIONER IS COATED FOR ENHANCED CORROSION PROTECTION.

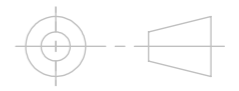
**TECHNICAL DATA**

HYDRAULIC PRESSURE AREA = 2953.69 mm<sup>2</sup>  
 MAXIMUM LOAD CAPACITY = 442.94 kN  
 MAXIMUM WORKING PRESSURE = 1500 bar  
 MAXIMUM PISTON MOVEMENT = 15 mm



It. No.	Description	Part No.	Qty.	Material	Finish	Weight
11	CEJN 116 SERIES HYD COUPLING	C101166202	1	VARIOUS	CHEMICAL BLACK	0.21
10	CEJN 116 SERIES HYD NIPPLE	C101161202	1	VARIOUS	CHEMICAL BLACK	0.06
9	1/4" BSP DOWTY BONDED SEAL	400-021-4490-026	4	STEEL	SELF COLOUR	0.00
8	ADAPTOR 1/4" BSP - 1/4" BSP	HTT.3427.000	2	STAINLESS STEEL	SELF COLOUR	0.03
7	M5 x 8 LG SOCKET SET SCREW	HTT.7700.008	3	STEEL	AS SUPPLIED	0.00
6	STANDARD No.2 THREAD INSERT 1 3/8"-8UN	HTT.9552.140	1	STEEL	CHEMICAL BLACK	1.75
5	CTST No.2 SEAL KIT	HTT.9552.003	1	POLYURETHANE	SELF COLOUR	0.01
4	CTST No.2 PISTON	HTT.9552.002	1	STEEL	SELF COLOUR	0.48
3	CTST No.2 LOADCELL BODY	HTT.9552.001	1	STEEL	CHEMICAL BLACK	1.52
2	STANDARD No.2 BRIDGE 1 3/8"	HTT.9552.139	1	STEEL	CHEMICAL BLACK	0.88
1	NUT ROTATING SOCKET 1.3/8"	HTT.9500.006	1	STEEL	CHEMICAL BLACK	0.16

UNLESS OTHERWISE STATED:  
 ALL DIMENSIONS IN MILLIMETERS  
 ALL UNSTATED CHAMFERS 1 x 45°  
 SURFACE FINISH 3.2 µm  
 REMOVE SHARP EDGES  
 IF IN DOUBT ASK



DO NOT SCALE DRAWING

SCALE  
 1:1

GENERAL TOLERANCES  
 LINEAR ± 0.125  
 ANGULAR ± 1/2°

DRAWN BY  
 MPE

DATE  
 04/12/2012

WEIGHT (kg)  
 5.14

CHECKED BY  
 DME

DATE  
 04/12/2012

**Tentec**<sup>®</sup>  
 www.tentec.net

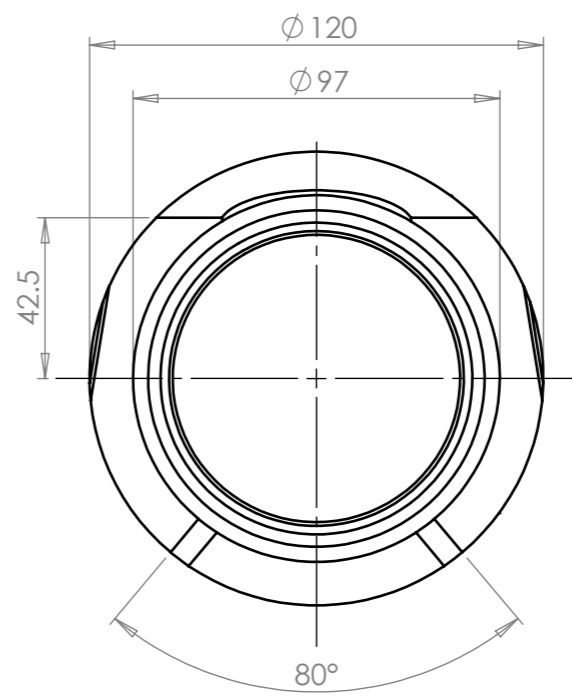
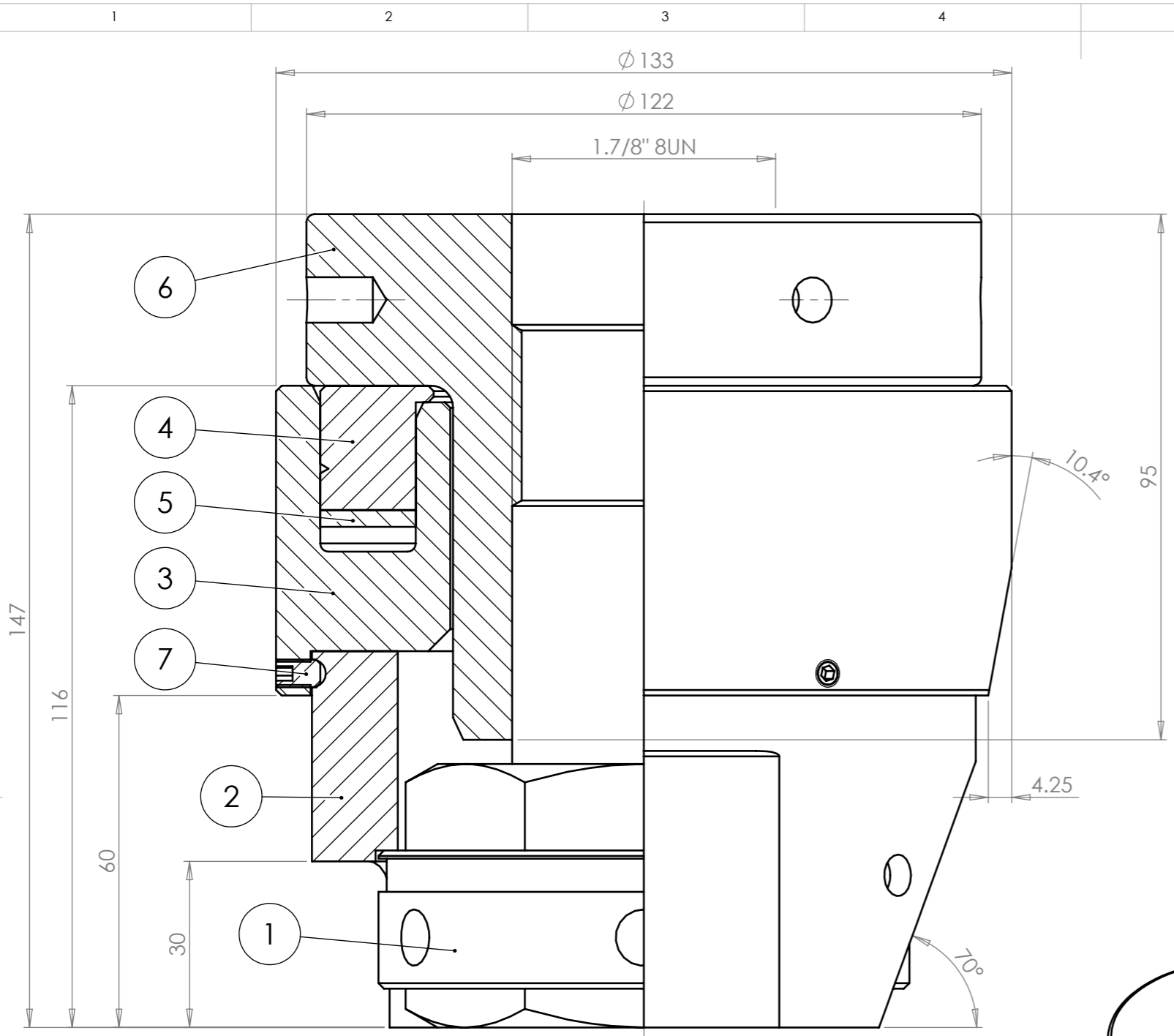
DRAWING TITLE  
 1.3/8" No.2 INSERT TYPE  
 BOLT TENSIONER

DRAWING No.  
**HTT.9552.138 A**

DMR	DATE	REVISION
DRAWING MODIFICATION HISTORY		

THIS DRAWING IS CONFIDENTIAL. IT IS THE SOLE AND EXCLUSIVE PROPERTY OF TENTE LTD AND IS SUBJECT TO RETURN UPON REQUEST. IT MAY NOT BE COPIED, DUPLICATED, DISCLOSED, TRANSMITTED OR COMMUNICATED TO A THIRD PARTY IN ANY MANNER, IN WHOLE OR ANY PART THEREOF, WITHOUT THE PRIOR WRITTEN CONSENT OF THE OWNER. NOR MAY IT BE USED FOR ANY PURPOSES OTHER THAN IN RELATION TO THE SINGLE CIRCUMSTANCE IN CONNECTION WITH WHICH IT HAS BEEN SUPPLIED. FOR COPYRIGHT PURPOSES THIS IS DEEMED TO APPLY EQUALLY TO THE DOCUMENT AND TO ANY DESIGNS, CALCULATIONS, RESULTS OR OTHER CONCEPTUAL MATTER DEPICTED THEREIN.

© Tentec Limited. All rights reserved

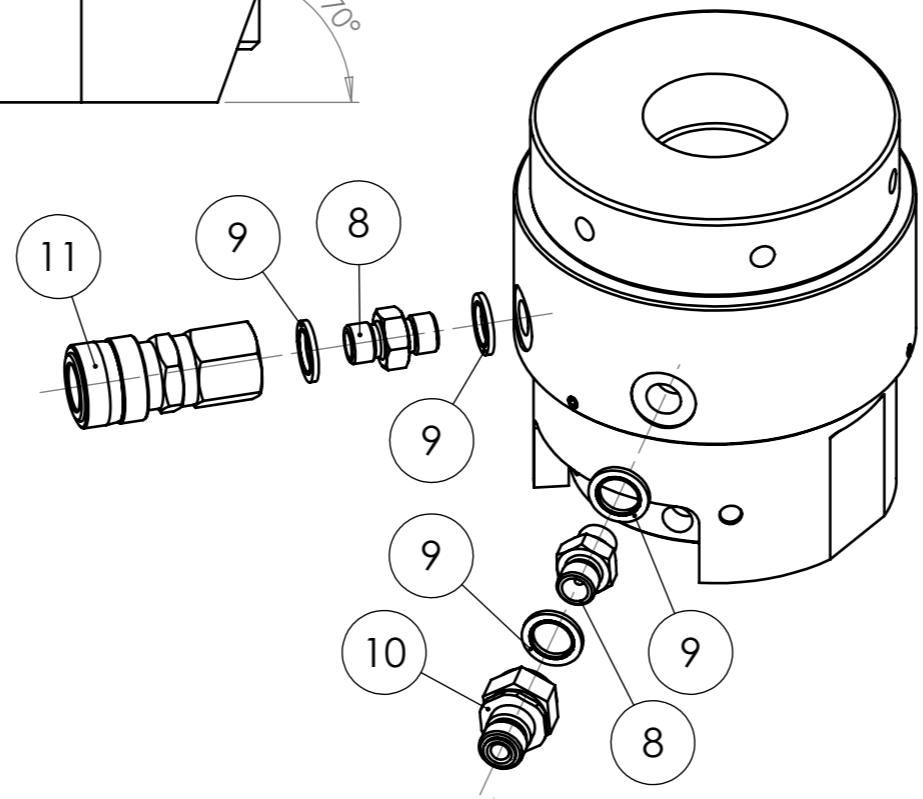


**BRIDGE FOOTPRINT**  
 SCALE 1 : 2  
 COMPRESSIVE STRESS:  
 379.99N/mm<sup>2</sup>

**TECHNICAL DATA**

HYDRAULIC PRESSURE AREA = 5405.70 mm<sup>2</sup>  
 MAXIMUM LOAD CAPACITY = 810.64 kN  
 MAXIMUM WORKING PRESSURE = 1500 bar  
 MAXIMUM PISTON MOVEMENT = 15 mm

**PROPOSED TOOL FEATURES**  
 HYDRAULIC TENSIONER IS FITTED WITH QUICK RELEASE HYDRAULIC CONNECTIONS, TO ENABLE QUICK AND SIMPLE HOSE CONNECTION.  
 HYDRAULIC TENSIONER IS FITTED WITH A DEVICE TO DIRECT OIL AWAY FROM THE OPERATOR, SHOULD THE PISTON BE OVER-STROKED.  
 HYDRAULIC TENSIONER IS FITTED WITH HIGH QUALITY, SELF-ENERGISING SEALS. NO SEAL ADJUSTMENT IS NECESSARY.  
 HYDRAULIC TENSIONER IS COATED FOR ENHANCED CORROSION PROTECTION.



It. No.	Description	Part No.	Qty.	Material	Finish	Weight
11	CEJN 116 SERIES HYD COUPLING	C101166202	1	VARIOUS	CHEMICAL BLACK	0.21
10	CEJN 116 SERIES HYD NIPPLE	C101161202	1	VARIOUS	CHEMICAL BLACK	0.06
9	1/4" BSP DOWTY BONDED SEAL	400-021-4490-026	4	STEEL	SELF COLOUR	0.00
8	ADAPTOR 1/4" BSP - 1/4" BSP	HTT.3427.000	2	STAINLESS STEEL	SELF COLOUR	0.03
7	M5 x 8 LG SOCKET SET SCREW	HTT.7700.008	3	STEEL	AS SUPPLIED	0.00
6	STANDARD No.3 THREAD INSERT 1 7/8"-8UN	HTT.9553.180	1	STEEL	CHEMICAL BLACK	3.48
5	CTST No.3 SEAL KIT	HTT.9553.003	1	POLYURETHANE	SELF COLOUR	0.02
4	CTST No.3 PISTON	HTT.9553.002	1	STEEL	SELF COLOUR	0.99
3	CTST No.3 LOADCELL BODY	HTT.9553.001	1	STEEL	CHEMICAL BLACK	2.55
2	STANDARD No. 3 BRIDGE 1 7/8"	HTT.9553.179	1	STEEL	CHEMICAL BLACK	1.99
1	NUT ROTATING SOCKET 1.7/8"	HTT.9500.010	1	STEEL	CHEMICAL BLACK	0.34

DMR	DATE	REVISION
DRAWING MODIFICATION HISTORY		
THIS DRAWING IS CONFIDENTIAL. IT IS THE SOLE AND EXCLUSIVE PROPERTY OF TENTE LTD AND IS SUBJECT TO RETURN UPON REQUEST. IT MAY NOT BE COPIED, DUPLICATED, DISCLOSED, TRANSMITTED OR COMMUNICATED TO A THIRD PARTY IN ANY MANNER, IN WHOLE OR ANY PART THEREOF, WITHOUT THE PRIOR WRITTEN CONSENT OF THE OWNER; NOR MAY IT BE USED FOR ANY PURPOSES OTHER THAN IN RELATION TO THE SINGLE CIRCUMSTANCE IN CONNECTION WITH WHICH IT HAS BEEN SUPPLIED. FOR COPYRIGHT PURPOSES THIS IS DEEMED TO APPLY EQUALLY TO THE DOCUMENT AND TO ANY DESIGNS, CALCULATIONS, RESULTS OR OTHER CONCEPTUAL MATTER DEPICTED THEREIN.		
© Tentec Limited. All rights reserved		

UNLESS OTHERWISE STATED:  
 ALL DIMENSIONS IN MILLIMETERS  
 ALL UNSTATED CHAMFERS 1 x 45°  
 SURFACE FINISH 3.2 µm  
 REMOVE SHARP EDGES IF IN DOUBT ASK

DO NOT SCALE DRAWING

GENERAL TOLERANCES  
 LINEAR ± 0.125  
 ANGULAR ± 1/2°

WEIGHT (kg)  
 9.72

SCALE  
 1:1

DRAWN BY  
 MPE

CHECKED BY  
 DME

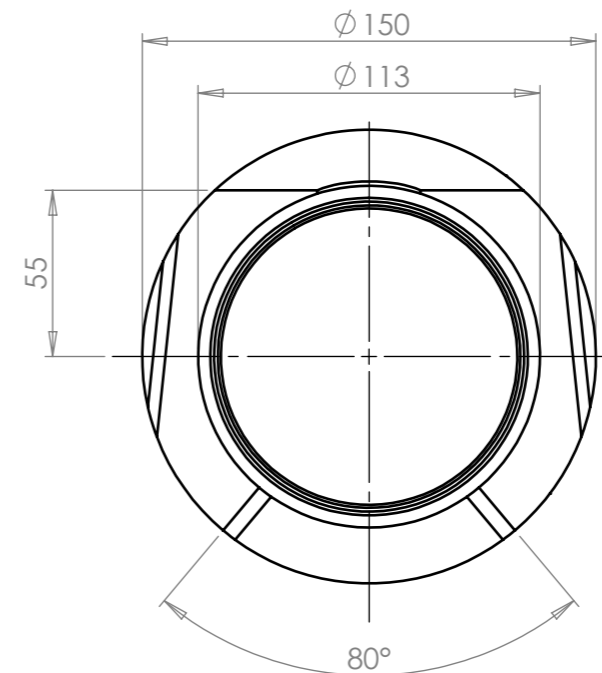
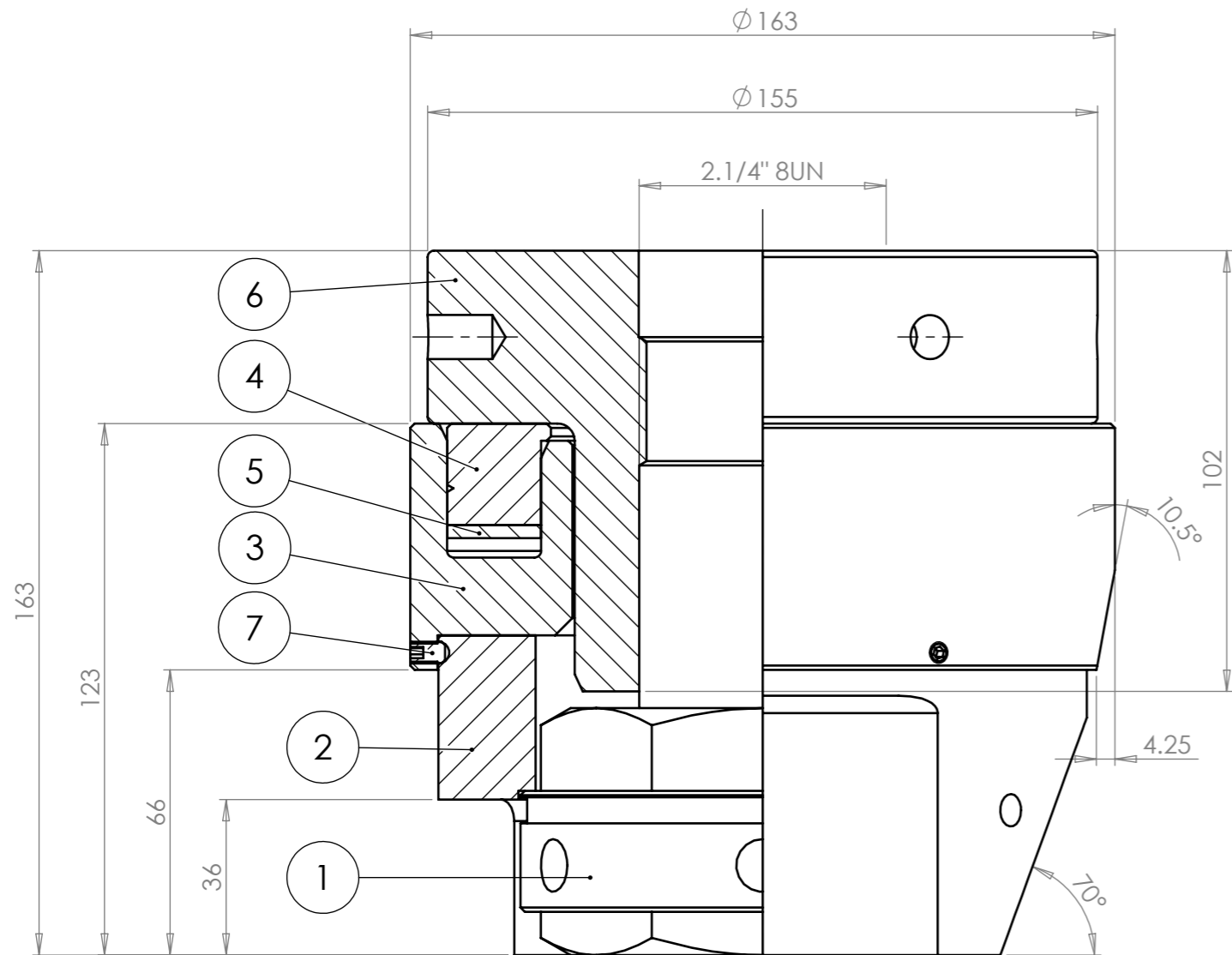
DATE  
 04/12/2012

DATE  
 04/12/2012

**Tentec**<sup>®</sup>  
[www.tentec.net](http://www.tentec.net)

DRAWING TITLE  
 1.7/8" No.3 INSERT TYPE BOLT TENSIONER

DRAWING No.  
**HTT.9553.178 A**



**BRIDGE FOOTPRINT**  
SCALE 1 : 2  
COMPRESSIVE STRESS:  
331.71N/mm<sup>2</sup>

**PROPOSED TOOL FEATURES**

HYDRAULIC TENSIONER IS FITTED WITH QUICK RELEASE HYDRAULIC CONNECTIONS, TO ENABLE QUICK AND SIMPLE HOSE CONNECTION.

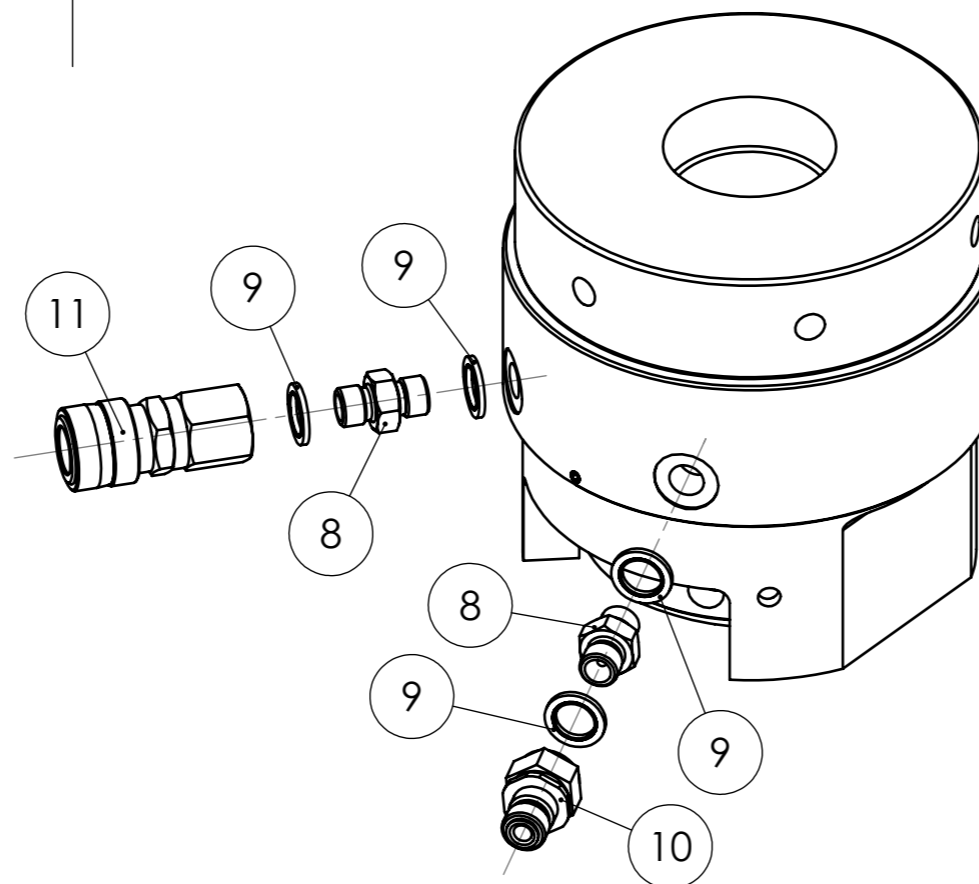
HYDRAULIC TENSIONER IS FITTED WITH A DEVICE TO DIRECT OIL AWAY FROM THE OPERATOR, SHOULD THE PISTON BE OVER-STROKED.

HYDRAULIC TENSIONER IS FITTED WITH HIGH QUALITY, SELF-ENERGISING SEALS. NO SEAL ADJUSTMENT IS NECESSARY

HYDRAULIC TENSIONER IS COATED FOR ENHANCED CORROSION PROTECTION

**TECHNICAL DATA**

HYDRAULIC PRESSURE AREA = 8489.96 mm<sup>2</sup>  
 MAXIMUM LOAD CAPACITY = 1273.16 kN  
 MAXIMUM WORKING PRESSURE = 1500 bar  
 MAXIMUM PISTON MOVEMENT = 15 mm



It. No.	Description	Part No.	Qty.	Material	Finish	Weight
11	CEJN 116 SERIES HYD COUPLING	C101166202	1	VARIOUS	CHEMICAL BLACK	0.21
10	CEJN 116 SERIES HYD NIPPLE	C101161202	1	VARIOUS	CHEMICAL BLACK	0.06
9	1/4" BSP DOWTY BONDED SEAL	400-021-4490-026	4	STEEL	SELF COLOUR	0.00
8	ADAPTOR 1/4" BSP - 1/4" BSP	HTT.3427.000	2	STAINLESS STEEL	SELF COLOUR	0.03
7	M5 x 8 LG SOCKET SET SCREW	HTT.7700.008	3	STEEL	AS SUPPLIED	0.00
6	STANDARD No.4 THREAD INSERT 2 1/4"-8UN	HTT.9554.216	1	STEEL	CHEMICAL BLACK	6.84
5	CTST No.4 SEAL KIT	HTT.9554.003	1	POLYURETHANE	SELF COLOUR	0.03
4	CTST No.4 PISTON	HTT.9554.002	1	STEEL	SELF COLOUR	1.61
3	CTST No4 LOADCELL BODY	HTT.9554.001	1	STEEL	CHEMICAL BLACK	3.64
2	STANDARD No. 4 BRIDGE 2 1/4"	HTT.9554.215	1	STEEL	CHEMICAL BLACK	3.69
1	NUT ROTATING SOCKET 2.1/4"	HTT.9500.012	1	STEEL	CHEMICAL BLACK	0.46

UNLESS OTHERWISE STATED:  
 ALL DIMENSIONS IN MILLIMETERS  
 ALL UNSTATED CHAMFERS 1 x 45°  
 SURFACE FINISH 3.2 µm  
 REMOVE SHARP EDGES  
 IF IN DOUBT ASK

DO NOT SCALE DRAWING

GENERAL TOLERANCES  
 LINEAR ± 0.125  
 ANGULAR ± 1/2°

WEIGHT (kg)  
 16.63

SCALE  
 1:1.5

DRAWN BY  
 MPE

CHECKED BY  
 DME

DATE  
 04/12/2012

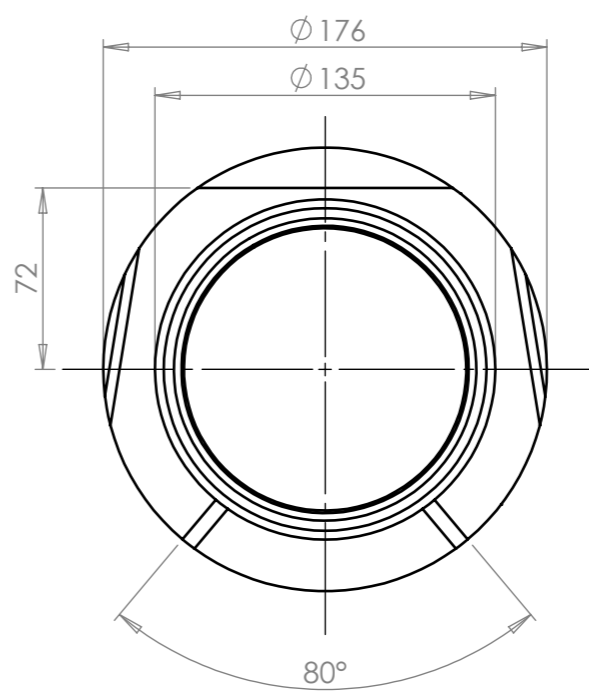
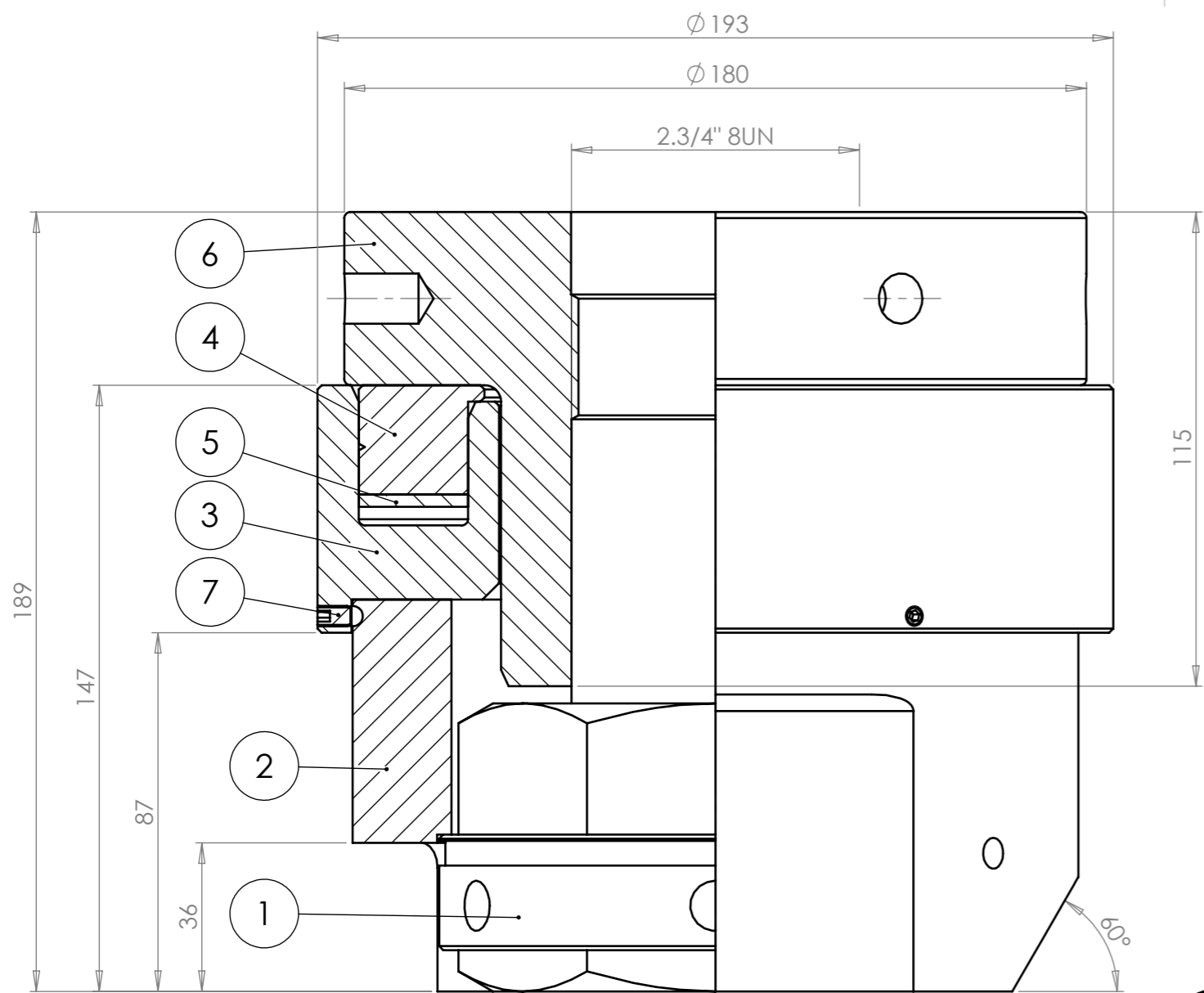
DATE  
 04/12/2012

**Tentec**<sup>®</sup>  
[www.tentec.net](http://www.tentec.net)

DRAWING TITLE  
 2.1/4" No.4 INSERT TYPE  
 BOLT TENSIONER

DRAWING No.  
**HTT.9554.214 A**

DMR	DATE	REVISION
DRAWING MODIFICATION HISTORY		
THIS DRAWING IS CONFIDENTIAL. IT IS THE SOLE AND EXCLUSIVE PROPERTY OF TENTEC LTD AND IS SUBJECT TO RETURN UPON REQUEST. IT MAY NOT BE COPIED, DUPLICATED, DISCLOSED, TRANSMITTED OR COMMUNICATED TO A THIRD PARTY IN ANY MANNER, IN WHOLE OR ANY PART THEREOF, WITHOUT THE PRIOR WRITTEN CONSENT OF THE OWNER; NOR MAY IT BE USED FOR ANY PURPOSES OTHER THAN IN RELATION TO THE SINGLE CIRCUMSTANCE IN CONNECTION WITH WHICH IT HAS BEEN SUPPLIED. FOR COPYRIGHT PURPOSES THIS IS DEEMED TO APPLY EQUALLY TO THE DOCUMENT AND TO ANY DESIGNS, CALCULATIONS, RESULTS OR OTHER CONCEPTUAL MATTER DEPICTED THEREIN		
© Tentec Limited. All rights reserved		



**BRIDGE FOOTPRINT**  
SCALE 1 : 3  
COMPRESSIVE STRESS:  
306.47N/mm<sup>2</sup>

**TECHNICAL DATA**

HYDRAULIC PRESSURE AREA =	12196.45 mm <sup>2</sup>
MAXIMUM LOAD CAPACITY =	1828.99 kN
MAXIMUM WORKING PRESSURE =	1500 bar
MAXIMUM PISTON MOVEMENT =	15 mm

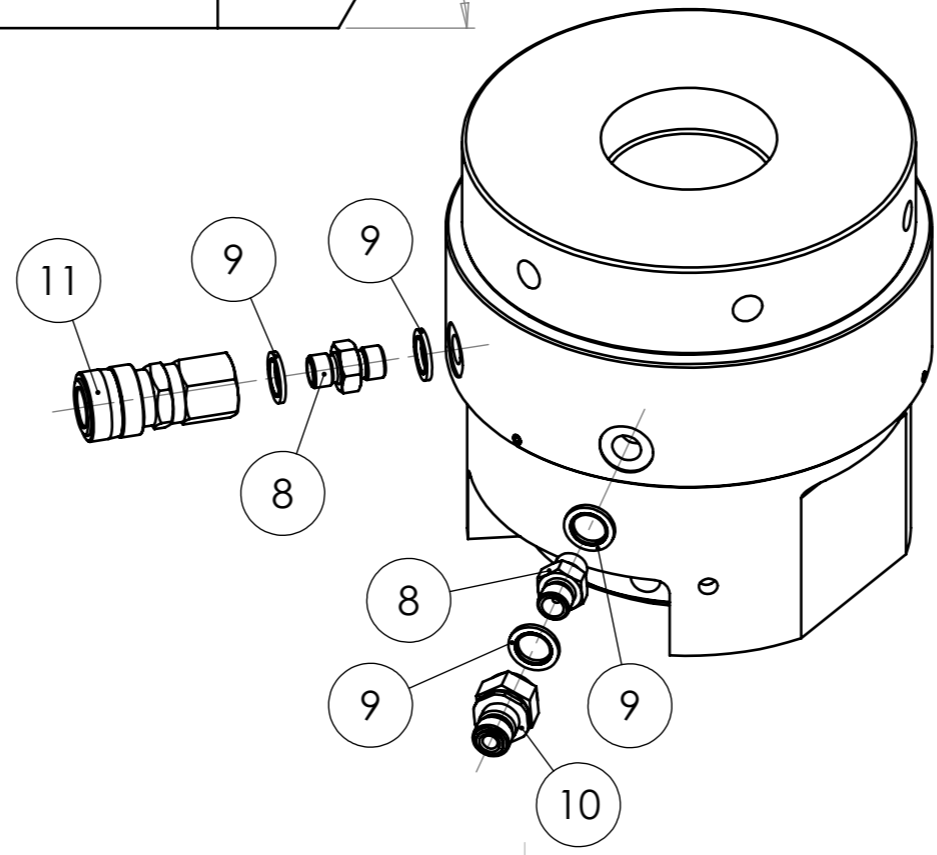
**PROPOSED TOOL FEATURES**

HYDRAULIC TENSIONER IS FITTED WITH QUICK RELEASE HYDRAULIC CONNECTIONS, TO ENABLE QUICK AND SIMPLE HOSE CONNECTION.

HYDRAULIC TENSIONER IS FITTED WITH A DEVICE TO DIRECT OIL AWAY FROM THE OPERATOR, SHOULD THE PISTON BE OVER-STROKED.

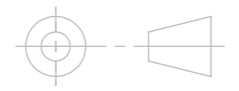
HYDRAULIC TENSIONER IS FITTED WITH HIGH QUALITY, SELF-ENERGISING SEALS. NO SEAL ADJUSTMENT IS NECESSARY.

HYDRAULIC TENSIONER IS COATED FOR ENHANCED CORROSION PROTECTION.



It. No.	Description	Part No.	Qty.	Material	Finish	Weight
11	CEJN 116 SERIES HYD COUPLING	C101166202	1	VARIOUS	CHEMICAL BLACK	0.21
10	CEJN 116 SERIES HYD NIPPLE	C101161202	1	VARIOUS	CHEMICAL BLACK	0.06
9	1/4" BSP DOWTY BONDED SEAL	400-021-4490-026	4	STEEL	SELF COLOUR	0.00
8	ADAPTOR 1/4" BSP - 1/4" BSP	HTT.3427.000	2	STAINLESS STEEL	SELF COLOUR	0.03
7	M5 x 8 LG SOCKET SET SCREW	HTT.7700.008	3	STEEL	AS SUPPLIED	0.00
6	STANDARD No.5 THREAD INSERT 2 3/4"-8UN	HTT.9555.236	1	STEEL	CHEMICAL BLACK	9.89
5	CTST No.5 SEAL KIT	HTT.9555.003	1	POLYURETHANE	SELF COLOUR	0.04
4	CTST No.5 PISTON	HTT.9555.002	1	STEEL	SELF COLOUR	2.62
3	CTST No5 LOADCELL BODY	HTT.9555.001	1	STEEL	CHEMICAL BLACK	5.26
2	STANDARD No. 5 BRIDGE 2 3/4"	HTT.9555.235	1	STEEL	CHEMICAL BLACK	6.89
1	NUT ROTATING SOCKET 2,3/4"	HTT.9500.014	1	STEEL	CHEMICAL BLACK	0.63

UNLESS OTHERWISE STATED:  
ALL DIMENSIONS IN MILLIMETERS  
ALL UNSTATED CHAMFERS 1 x 45°  
SURFACE FINISH 3.2 µm  
REMOVE SHARP EDGES  
IF IN DOUBT ASK



DO NOT SCALE DRAWING

SCALE  
1:1.5

GENERAL TOLERANCES  
LINEAR ± 0.125  
ANGULAR ± 1/2°

DRAWN BY  
MPE

DATE  
04/12/2012

WEIGHT (kg)  
25.69

CHECKED BY  
DME

DATE  
04/12/2012



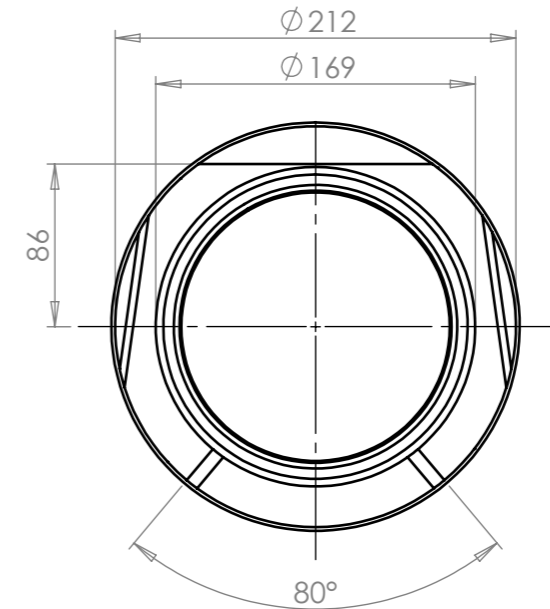
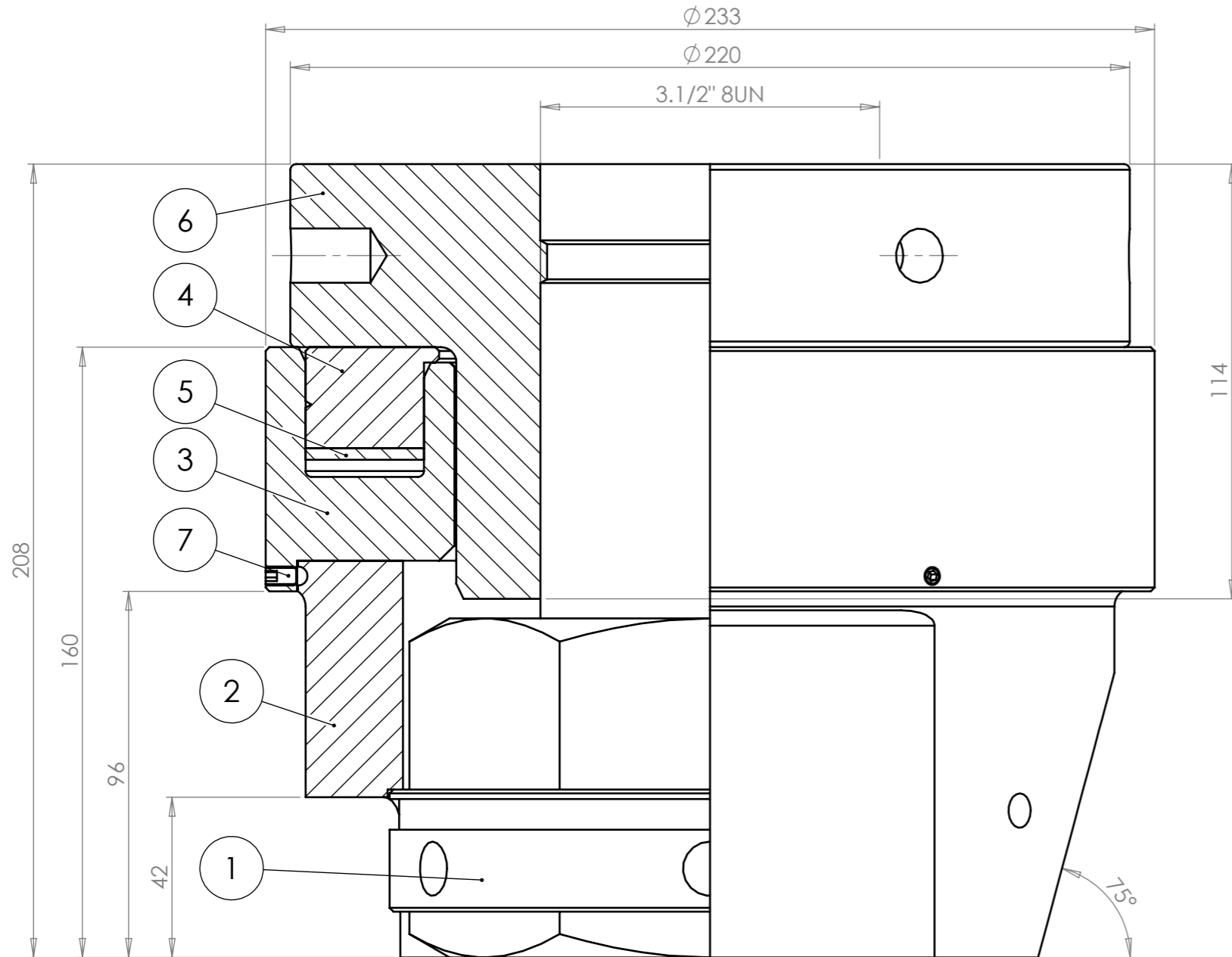
DRAWING TITLE  
2.3/4" No.5 INSERT TYPE  
BOLT TENSIONER

DRAWING No.  
**HTT.9555.234 A**

DMR	DATE	REVISION
DRAWING MODIFICATION HISTORY		

THIS DRAWING IS CONFIDENTIAL. IT IS THE SOLE AND EXCLUSIVE PROPERTY OF TENTEC LTD AND IS SUBJECT TO RETURN UPON REQUEST. IT MAY NOT BE COPIED, DUPLICATED, DISCLOSED, TRANSMITTED OR COMMUNICATED TO A THIRD PARTY IN ANY MANNER, IN WHOLE OR ANY PART THEREOF, WITHOUT THE PRIOR WRITTEN CONSENT OF THE OWNER; NOR MAY IT BE USED FOR ANY PURPOSES OTHER THAN IN RELATION TO THE SINGLE CIRCUMSTANCE IN CONNECTION WITH WHICH IT HAS BEEN SUPPLIED. FOR COPYRIGHT PURPOSES THIS IS DEEMED TO APPLY EQUALLY TO THE DOCUMENT AND TO ANY DESIGNS, CALCULATIONS, RESULTS OR OTHER CONCEPTUAL MATTER DEPICTED THEREIN.

© Tentec Limited. All rights reserved



**BRIDGE FOOTPRINT**  
 SCALE 1 : 4  
 COMPRESSIVE STRESS:  
 376.55N/mm<sup>2</sup>

**TECHNICAL DATA**

HYDRAULIC PRESSURE AREA = 17627.48 mm<sup>2</sup>  
 MAXIMUM LOAD CAPACITY = 2643.43 kN  
 MAXIMUM WORKING PRESSURE = 1500 bar  
 MAXIMUM PISTON MOVEMENT = 15 mm

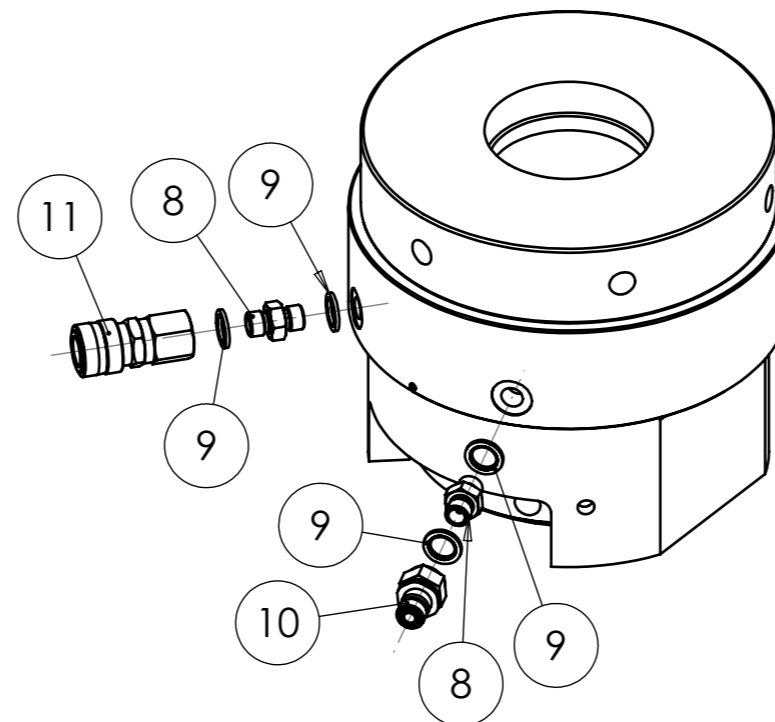
**PROPOSED TOOL FEATURES**

HYDRAULIC TENSIONER IS FITTED WITH QUICK RELEASE HYDRAULIC CONNECTIONS, TO ENABLE QUICK AND SIMPLE HOSE CONNECTION.

HYDRAULIC TENSIONER IS FITTED WITH A DEVICE TO DIRECT OIL AWAY FROM THE OPERATOR, SHOULD THE PISTON BE OVER-STROKED.

HYDRAULIC TENSIONER IS FITTED WITH HIGH QUALITY, SELF-ENERGISING SEALS. NO SEAL ADJUSTMENT IS NECESSARY

HYDRAULIC TENSIONER IS COATED FOR ENHANCED CORROSION PROTECTION



It. No.	Description	Part No.	Qty.	Material	Finish	Weight
11	CEJN 116 SERIES HYD COUPLING	C101166202	1	VARIOUS	CHEMICAL BLACK	0.21
10	CEJN 116 SERIES HYD NIPPLE	C101161202	1	VARIOUS	CHEMICAL BLACK	0.06
9	1/4" BSP DOWTY BONDED SEAL	400-021-4490-026	4	STEEL	SELF COLOUR	0.00
8	ADAPTOR 1/4" BSP - 1/4" BSP	HTT.3427.000	2	STAINLESS STEEL	SELF COLOUR	0.03
7	M5 x 8 LG SOCKET SET SCREW	HTT.7700.008	3	STEEL	AS SUPPLIED	0.00
6	STANDARD No.6 THREAD INSERT 3 1/2"-8UN	HTT.9556.311	1	STEEL	CHEMICAL BLACK	16.03
5	CTST No.6 SEAL KIT	HTT.9556.003	1	POLYURETHANE	SELF COLOUR	0.05
4	CTST No.6 PISTON	HTT.9556.002	1	STEEL	SELF COLOUR	3.78
3	CTST No6 LOADCELL BODY	HTT.9556.001	1	STEEL	CHEMICAL BLACK	7.95
2	STANDARD No. 6 BRIDGE 3 1/2"	HTT.9556.313	1	STEEL	CHEMICAL BLACK	9.18
1	NUT ROTATING SOCKET 3.1/2"	HTT.9500.017	1	STEEL	CHEMICAL BLACK	1.05

UNLESS OTHERWISE STATED:  
 ALL DIMENSIONS IN MILLIMETERS  
 ALL UNSTATED CHAMFERS 1 x 45°  
 SURFACE FINISH 3.2 µm  
 REMOVE SHARP EDGES  
 IF IN DOUBT ASK



DO NOT SCALE DRAWING

SCALE  
 1:1.5

GENERAL TOLERANCES  
 LINEAR ± 0.125  
 ANGULAR ± 1/2°

DRAWN BY  
 MPE  
 DATE  
 04/12/2012

WEIGHT (kg)  
 38.41

CHECKED BY  
 DME  
 DATE  
 04/12/2012

**Tentec**<sup>®</sup>  
[www.tentec.net](http://www.tentec.net)

DRAWING TITLE  
 3.1/2" No.6 INSERT TYPE  
 BOLT TENSIONER

DRAWING No.  
**HTT.9556.312 A**

DMR	DATE	REVISION
DRAWING MODIFICATION HISTORY		
THIS DRAWING IS CONFIDENTIAL. IT IS THE SOLE AND EXCLUSIVE PROPERTY OF TENTE LTD AND IS SUBJECT TO RETURN UPON REQUEST. IT MAY NOT BE COPIED, DUPLICATED, DISCLOSED, TRANSMITTED OR COMMUNICATED TO A THIRD PARTY IN ANY MANNER, IN WHOLE OR ANY PART THEREOF, WITHOUT THE PRIOR WRITTEN CONSENT OF THE OWNER; NOR MAY IT BE USED FOR ANY PURPOSES OTHER THAN IN RELATION TO THE SINGLE CIRCUMSTANCE IN CONNECTION WITH WHICH IT HAS BEEN SUPPLIED. FOR COPYRIGHT PURPOSES THIS IS DEEMED TO APPLY EQUALLY TO THE DOCUMENT AND TO ANY DESIGNS, CALCULATIONS, RESULTS OR OTHER CONCEPTUAL MATTER DEPICTED THEREIN		
© Tentec Limited. All rights reserved		