

Atlas Copco



SMARTLINK 2.0

Remote monitoring & service for marine compressors



Your SMARTLINK to top compressed air performance

How do you get the most out of your Atlas Copco compressed air system? Consistent monitoring ensures timely maintenance and detects opportunities to optimize reliability and efficiency. Onboard a working ship, this kind of close supervision is nearly impossible. That is why Atlas Copco's **SMARTLINK 2.0** allows you to do it remotely. With **SMARTLINK 2.0**, you can track and analyze the vital signs of your ship's compressed air equipment – even if that ship is thousands of miles away. It's next-level accessibility for the top performance you need.



Always connected

SMARTLINK 2.0 allows you to monitor your ship's compressed air system from just about anywhere – whether you are onboard of the vessel, working from shore or at home. All you need is a computer or mobile device and an Internet connection to keep an eye on your operation.



Easy to use

SMARTLINK 2.0 does not overwhelm you with raw data that may be confusing or difficult to interpret. Its intuitive dashboard gives you an easy, actionable overview of your machines, performance trends, service information and event alerts.



Peace of mind

With **SMARTLINK 2.0**, you never miss a dip in performance or a maintenance interval. And the system also makes it easy to identify potential problems before they affect your ship's operations – and your bottom line.



Performance

A compressed air system that is optimally installed, set up and operated costs less to run. Use **SMARTLINK 2.0** data and analysis to identify opportunities to finetune the performance of your system and maximize your operational savings.



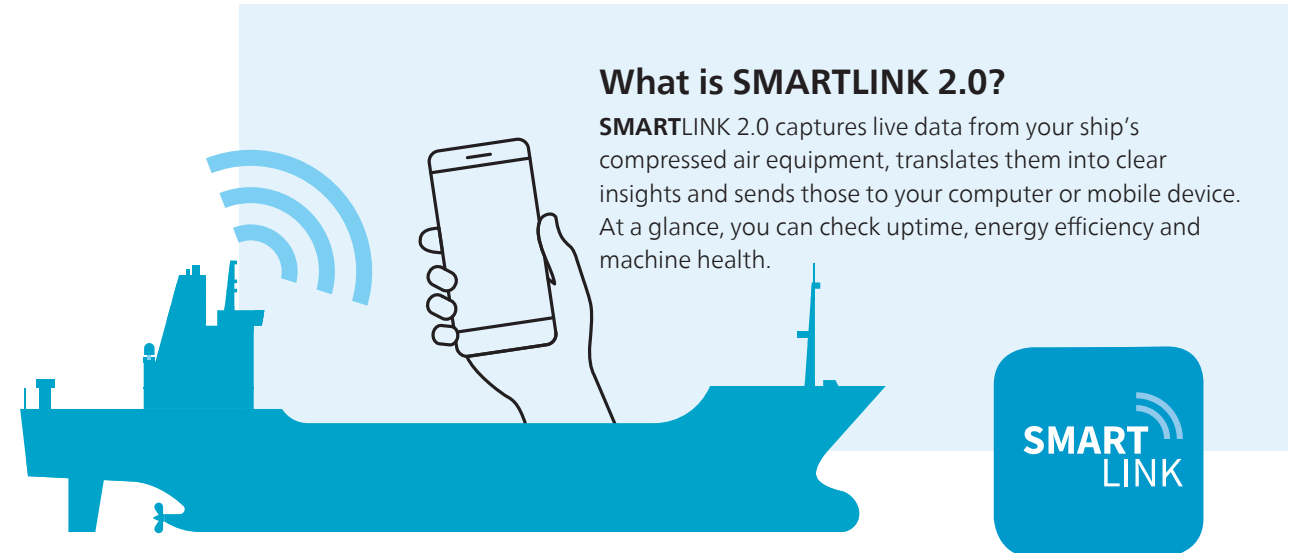
One marine partner

Atlas Copco is the only company that has developed a truly complete marine air offer. This means you can work with just one supplier for all your compressed air needs, from the commissioning to the maintenance and the optimization of your air system.



Sustainability

The number one priority of the marine industry is sustainability. Atlas Copco will help you turn goals and ambitions into realizations. Increasing efficiency, lowering emissions, and reducing your overall environmental footprint drive our unrelenting investment in innovation. It's what allows us and our customers to continue to set new standards in compressed air performance.



What is SMARTLINK 2.0?

SMARTLINK 2.0 captures live data from your ship's compressed air equipment, translates them into clear insights and sends those to your computer or mobile device. At a glance, you can check uptime, energy efficiency and machine health.

Your ship connects to **SMARTLINK 2.0** via its LAN and/or whenever it reaches a port.



The optimal plan for your needs

Meet your operational goals with our different **SMARTLINK 2.0** service levels:

SMARTLINK SERVICE – included as standard. Gives you active monitoring of more than 30 data points, recommendations for performance improvements, and easy access to service and advice.

SMARTLINK UPTIME – generates maximum availability of all connected machines, early warnings and recommendations, and alerts sent to your computer or smartphone.

SMARTLINK ENERGY – delivers the analyses, indicators and benchmarks that can help you save up to 30% in energy consumption.

Total Responsibility – The ultimate peace of mind plan. Atlas Copco will take complete care of your compressed air equipment, which includes on-time maintenance by service experts, genuine parts, upgrades, overhauls and full risk coverage.

A trusted marine partner



Versatility

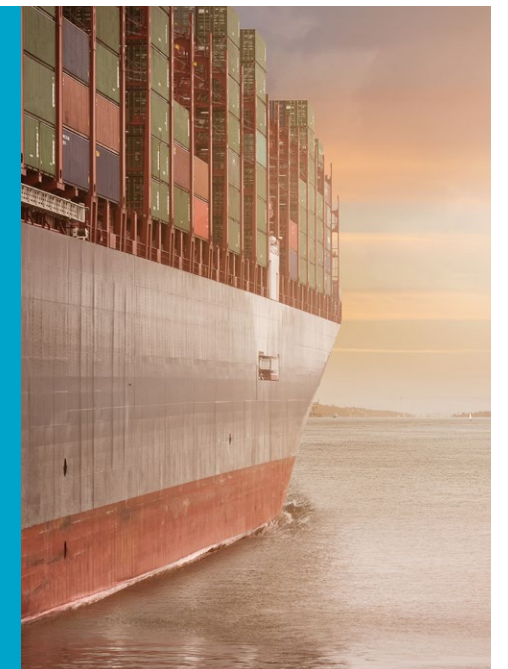
Hardly any two ships are the same, so why should their equipment be? Atlas Copco can offer a custom solution that matches your exact needs. We will find the right air system with the lowest overall cost of ownership.

Confidence

Alone on the high seas, your crews need to be able to trust their equipment. Atlas Copco's state-of-the-art marine products are built and certified to weather the roughest conditions.

Proximity

We are wherever your ships are going. Atlas Copco is present in more than 160 countries. With an extensive dealer network and a variety of service offers, we make sure you keep running full steam ahead.



Exceeding the toughest standards

Atlas Copco has been granted triple ISO 9001:2000, ISO 14001:2014 and OHSAS 18001 certification for Quality, Environmental and Occupational Health & Safety Management by Lloyd's Register Quality Assurance (LRQA). This demonstrates our commitment to the quality of our services, our care for the environmental impact of our operations and the health of our employees and customers.

Atlas Copco has a close working relationship with all major classification societies. We are always working to develop our products for the benefit of ship owners and vessel crews by ensuring our products perform optimally in the most demanding maritime conditions and temperatures.



Atlas Copco

atlascopco.com

