



Atlas Copco



Low pressure large air compressors

X-Air+ 1800-225

1800 - 1200 CFM; 58 - 225 PSI

Low pressure large air compressor



Flow to footprint ratio

The X-Air+ 1800-225 offers the largest flow of air and a wide range (58-225 psi) of working pressures with the lightest and smallest footprint in the market.



Maximum uptime

The X-Air+ 1800-225 was designed with the operator in mind as it is easy to control (even remotely), transport, refuel and service so your uptime is maximized. Extended service intervals (500 hours for the engine and 1000 hours for the compressor), make these compressors the workhorses of your fleet.



Boost your return on investment

These energy-efficient workhorses tackle applications such as drill and blast, shallow depth drilling, plant back-up air, abrasive blasting, pipeline pigging, drying and purging. Aligning pressure or flow per application not only increases versatility but also overall performance. In addition, fuel efficiency is best-in-class for all pressure settings.



Customized to your needs

Aftercooler, water separator, and filters come as standard always. The expertise in delivering options and the capability to design that is in line with your company branding enables us to offer optimization as per your business's requirements.

X-Air+ 1800-225

- Flow: 1200 up to 1800 cfm
- Pressure: 58 up to 225 psi



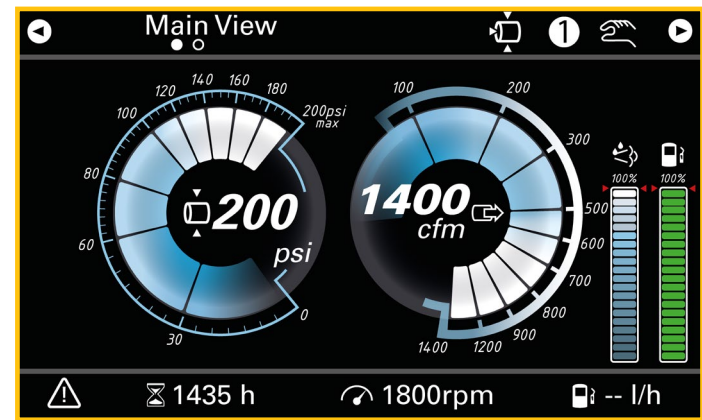
Stop compressing air – start controlling it!

Smart Air Xc4004 controller

We believe a controller should put you in complete control, while being intuitive, and most importantly easy to use and navigate.

Advanced features:

-  Smart user interface with key parameters at first sight
-  Mirror application for remote control
-  Audible, clear warning system for any deviations
-  Robust design which resists water and dust (IP67 rated)
-  Takes efficiency, control and connectivity to the next level



- Easy to use interface
- Powerful insights increase uptime
- Save time through use of remote control

Intuitive control with powerful insights

- Intuitive and easy to use
- Simultaneous view of pressure and flow
- On-board histogram of 15 parameters
- 7 inch screen
- IP67 rated

Remote controller

- Optional mirror box for remote control operation

FuelXpert

- Reduces fuel consumption to up to -10% at 75% load
- Lowers operational costs, increases project profitability

Features and benefits

Does your compressor have PACE?

PACE technology redefines the relationship between pressure and flow. A compressor with PACE technology can cover the application needs of, on average, three fixed pressure compressors.



What PACE is:

- An electronic regulation system programmed via a digital controller
- A system that offers the widest operating pressure range within a single compressor allowing multiple pressure and flow combinations
- ECO mode greatly improves fuel economy during unload, no-load operation and allows for auto-start, auto-stop control without additional hardware
- A system that gives you the versatility of three machines in one package
- The Cat C13B engine supplies remarkable power and torque in a smaller, lighter package

XC 4004 controller

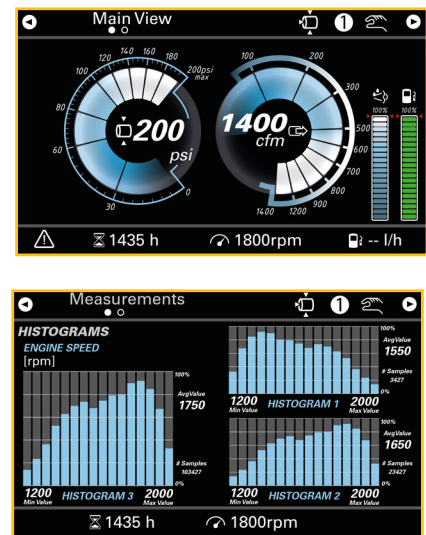
- Intuitive and easy to use controller
- Built-in logics safeguard the engine through warm-up and cool down timers
- Easy diagnostics for troubleshooting

Quality Air

- Aftercooler condensate is routed to the exhaust where it is then atomized in the exhaust stream using a stainless steel nozzle
- This further reduces noise and eliminates oil/water contamination on the worksite
- PFF system provides .001 micron clean dry air with 20 degree approach aftercooler

Heavy duty enclosure

- Bumper protection
- External lifting eye
- 2 layer corrosion protection for canopy and frame
- Single-sided Service



Applications include:



Pipeline drying



150 psi: Abrasive blasting



Shotcrete applications



Cluster drilling

Condensate flashing:

Solution:

- Condensate is directly injected into the engine exhaust stream (after exhaust treatment system)
- The condensate is vaporized by exposure to hot exhaust gas

Intuitive user operation:

- Toggle between the presets in a simple click
- Custom pressure can be set in 3 simple clicks
- Pressure can be adjusted in increments of 2 psi



FleetLink

Our intelligent telematics system designed to remotely monitor and manage your machine(s). Everything is a click away while also allowing you to:

Optimize Fleet Utilization

Provides a clear overview of your machines’ functionality for peak fleet efficiency.

Increase Fleet Productivity

Receive proactive service due notifications avoiding downtime while also reaping the benefits of increased awareness and planning of required maintenance, anticipation of unprecedented interventions and decreased maintenance costs.

Increased Fleet Efficiency

Monitor and manage equipment amping up operations and reducing operating costs.

Remotely view critical controller data such as alarms, fuel consumption, battery voltage, vessel pressure etc.

A connectivity solution managed proactively making your fleet more productive and saving valuable time and money!

Technical data

X-Air+ 1800-225		
Normal effective working pressure	PSI(G)	100 - 225
Minimum working pressure	PSI(G)	58
Free Air Delivery	CFM	1800 - 1200
Fuel consumption @100%	GAL/H	24
Max sound power level (Lpa)	dB(A)	86.2
Capacity of compressor oil system	US GAL	30
Max. Ambient temperature	°F	122
Min. Ambient temperature	°F	-13
Engine		
Engine type		Caterpillar C13B
Emission regulation		T4F / Stage5
Max. Power	HP	536
Oil capacity	US GAL	12.45
Dimensions		
Dimensions	IN	229 x 93.5 x 102.5
Fuel tank capacity	US GAL	255
Weight (wet)	LBS	17,605
UN31A Fuel Tank Capacity (Canada)	US GAL	252

Standard features

- XC4004 Controller
- FuelXpert
- PACE
- Eco Mode
- Integrated air treatment with aftercooler, water-separator and coalescent filters
- Cold weather equipment
- FleetLink
- UN31A Fuel Tank (Standard for Canada)

Options

- Skid-mounted
- Remote control with use of a mirror box
- Custom colors

Our air solutions portfolio

Portable air compressors diesel driven

Small range



- 95-250 cfm
- 58-150 psi

Medium range



- 375-900 cfm
- 58-250 psi

Large range



- 950-1800 cfm
- 58-508 psi

Portable air compressors electric driven

E-Air, electric range



- 130-1286 cfm
- 72-200 psi

B-Air, battery range



- 130-185 cfm
- 72-175 psi

Boosters



- Up to 4500 cfm
- Up to 5000 psi

Handheld tools

Pneumatic tools



- Breakers
- Rock drills
- Additional air tools

Hydraulic tools



- Breakers
- Powerpacks
- Additional hydraulic tools

Gas engine driven tools



- Breakers & tie tampers
- Rock drills

Portable air treatment products

Nitrogen membrane generators



- Up to 3000 cfm
- Up to 363 psi

Desiccant air dryers



- Up to 2750 cfm
- Dew point: -40 °C/-40 °F

Online solutions

FleetLink

Intelligent telematics is a system that helps optimize fleet usage and reduce maintenance, ultimately saving time and cutting operating costs.

