

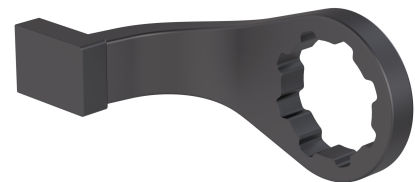
Reaction bar

Printed Matter No.9839 0542 00
Publication Date 2024-03-07

Valid from Serial No. -

Instruction Supplement

S-type (1300 Nm)	4210 4480 70
S-type (2400 Nm)	4210 4480 74
S-type (4500 Nm)	4210 4480 75
S-type (4500 Nm)	4210 4480 76
S-type (8100 Nm)	4210 4480 77
S-type (4100 Nm)	4210 4480 85
S-type (1300 Nm)	4210 4480 90
S-type (8100 Nm)	4210 4480 92
S-type (4100 Nm)	4210 4480 93
S-type (2600 Nm)	4210 4480 94
S-type (2400 Nm)	4210 4481 74



WARNING

To reduce risk of injury, everyone using, installing, repairing, maintaining, changing accessories on, or working near this tool MUST read and understand these instructions before performing any such task.

DO NOT DISCARD - GIVE TO USER

Atlas Copco

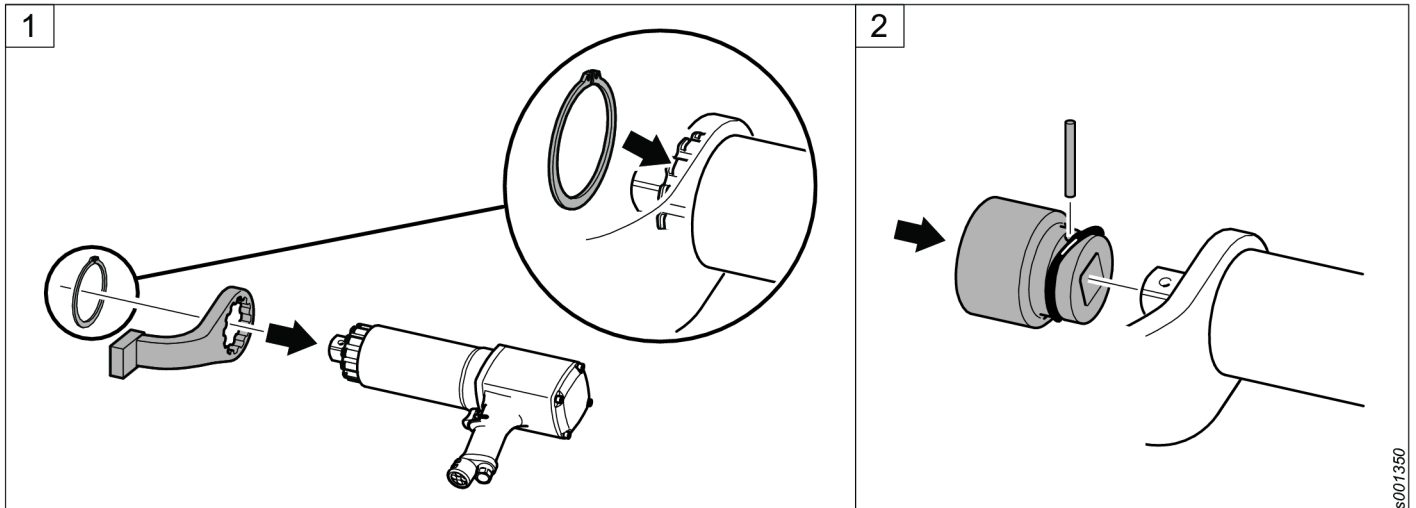
Table of Contents

EN	Instruction Supplement.....	3
----	-----------------------------	---

Instruction Supplement

Installing the reaction bar

1. Attach the reaction bar to the tool and insert the retaining ring into the groove to hold the reaction bar in place.
2. Attach the socket to the square drive. Make sure to insert the locking pin through the socket and square drive according to the illustration.



Operating the tool with reaction bar

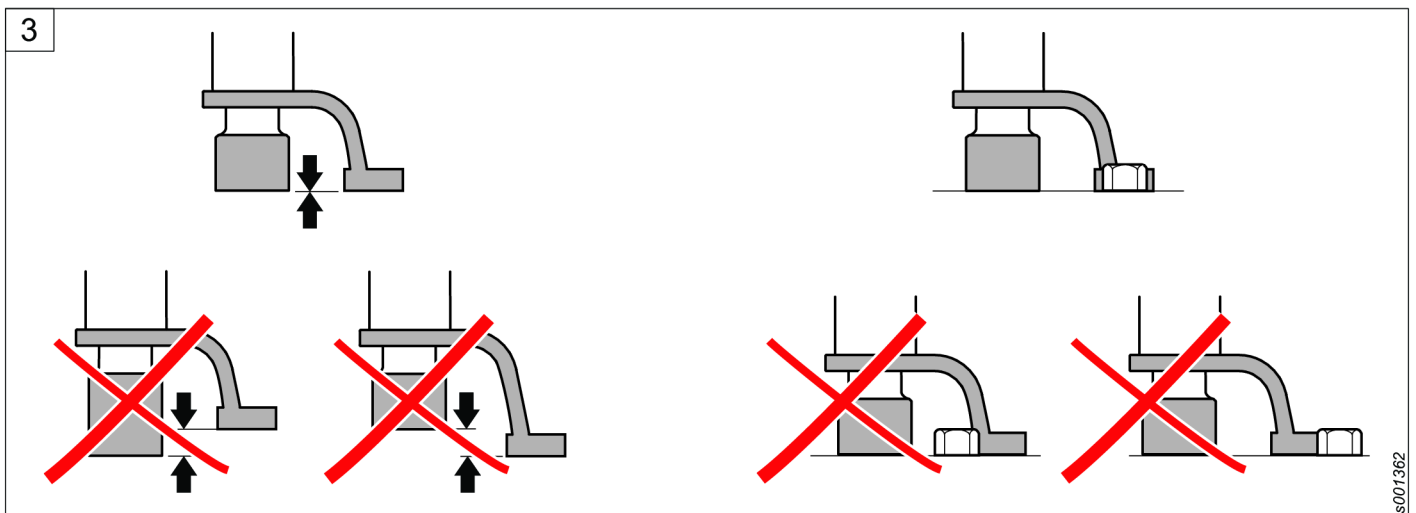
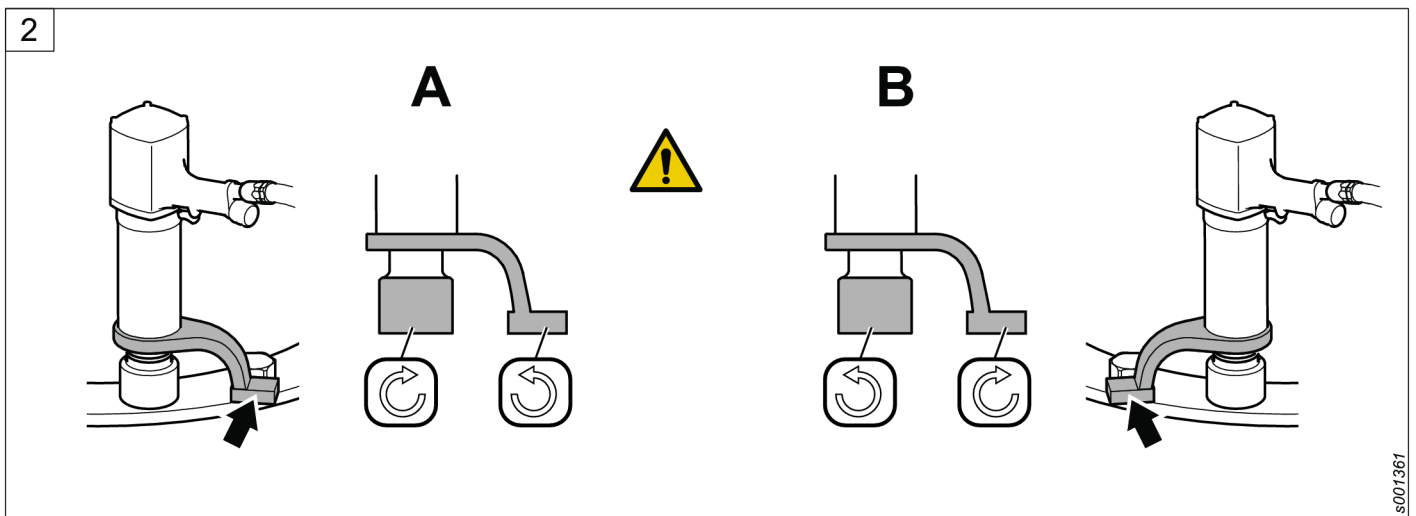
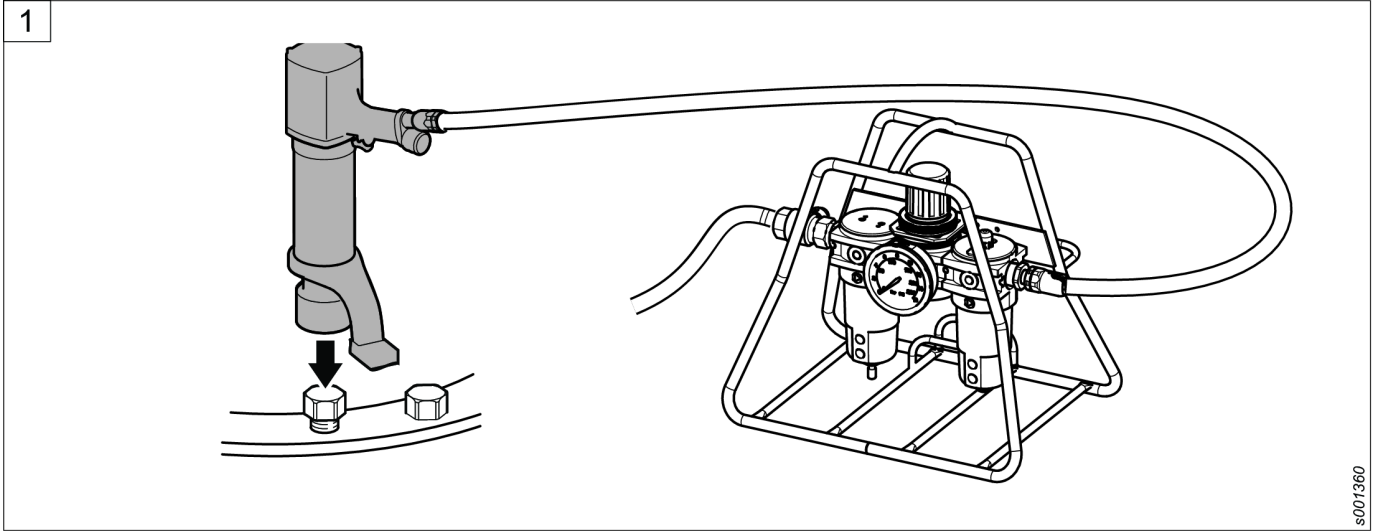
1. Attach the tool to the application.
2. **⚠ WARNING Be aware that the reaction bar will turn in the opposite direction to the tool.**

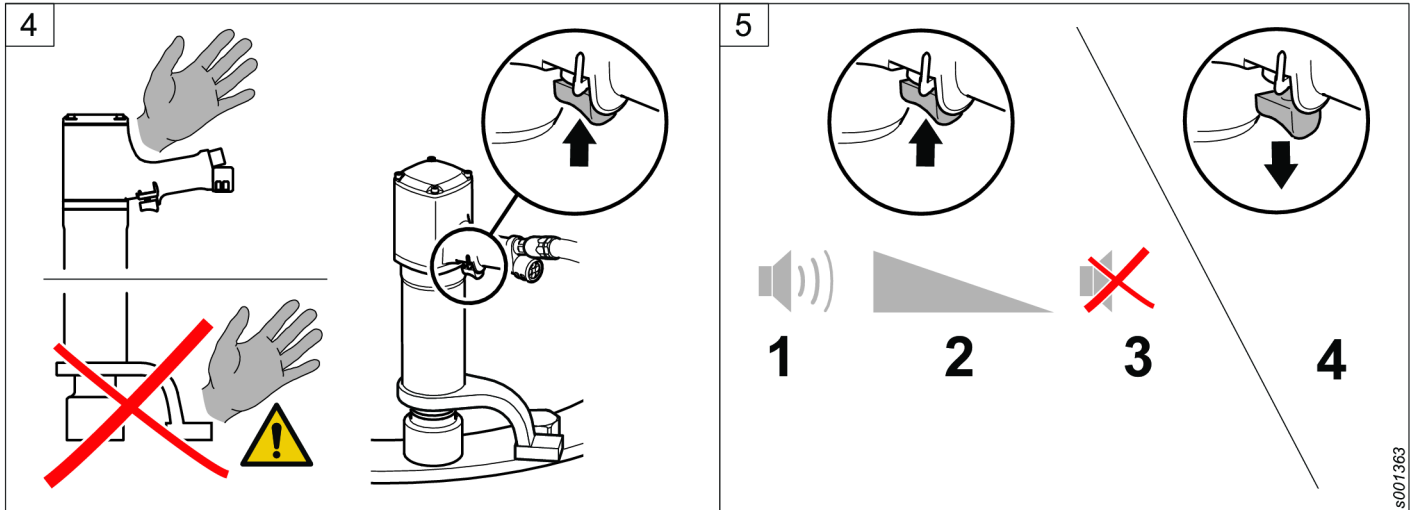
By using the reverse lever, the tool can be operated in both clockwise and counter-clockwise directions.

3. Make sure the tool is placed in the correct position on the work surface as described in the picture. The end surface of the reaction bar and the socket/nut must be aligned. Make sure that the foot of the reaction bar hits the center of the nut that takes the reaction force.
4. **⚠ WARNING Never put your hand on or close to the reaction bar while the tool is being used.**

Press the push button to start the tool.

5. Continue pressing the push button while running down the nut. With pneumatic tools you can hear a sound, while the tool is running the nut down. When the sound decreases, release the push button to stop the tool. With electric tools the run down of the nut is controlled by the Power Focus.

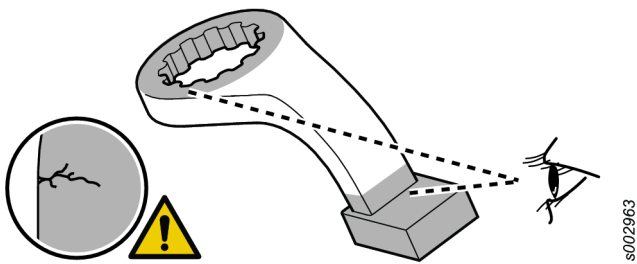




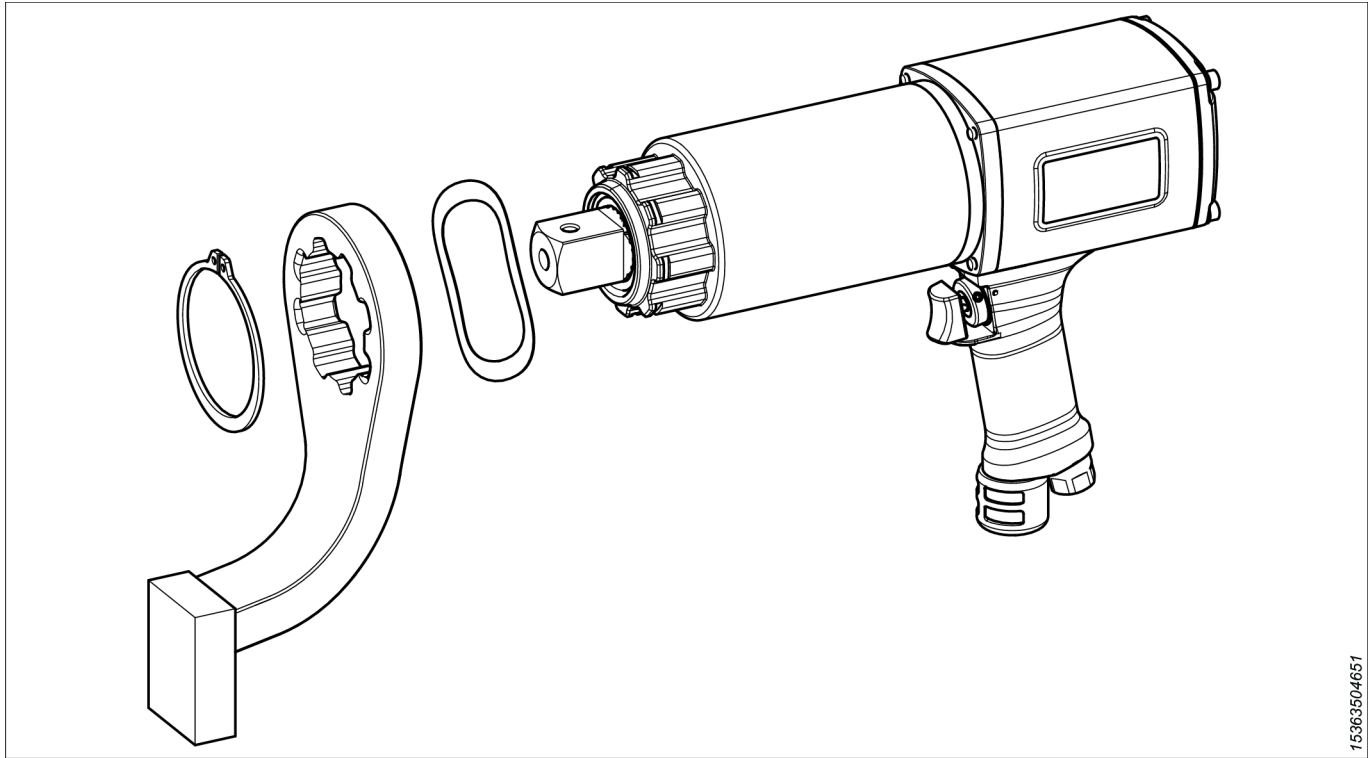
Maintenance

If the reaction bar is used daily, do a visual inspection every day of the sensitive areas, for example near the center hole and at the thinnest parts of the reaction bar.

⚠ WARNING Always replace cracked or damaged reaction bars.



When waved washer is included, make sure to assembly in correct order





**Atlas Copco Industrial
Technique AB**
SE-10523 STOCKHOLM
Sweden
Telephone: +46 8 743 95 00
www.atlascopco.com

© Copyright 2024, Atlas Copco Industrial Technique AB. All rights reserved.
Any unauthorized use or copying of the contents or part thereof is prohibited.
This applies in particular to trademarks, model denominations, part numbers
and drawings. Use only authorized parts. Any damage or malfunction caused
by the use of unauthorized parts is not covered by Warranty or Product
Liability.

Out of respect to wildlife and nature, our technical literature is printed on
environmentally friendly paper.