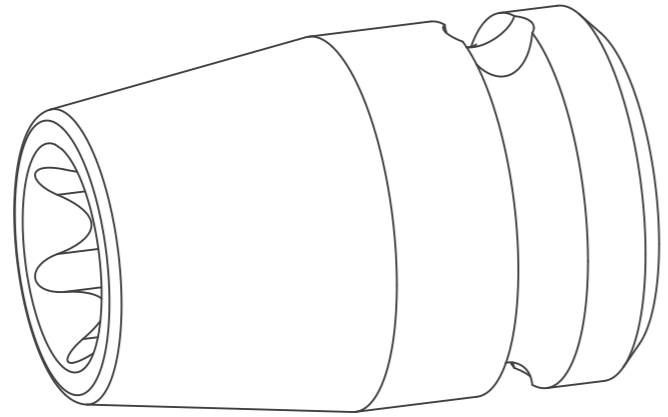
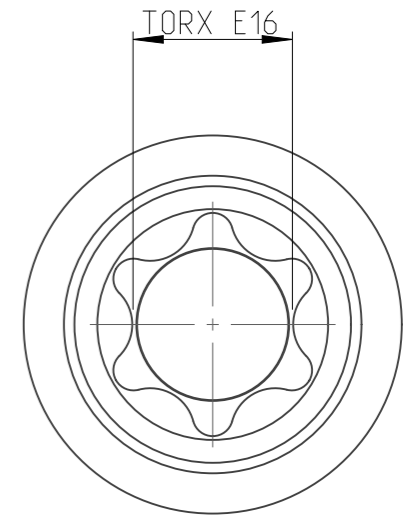
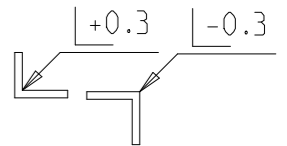
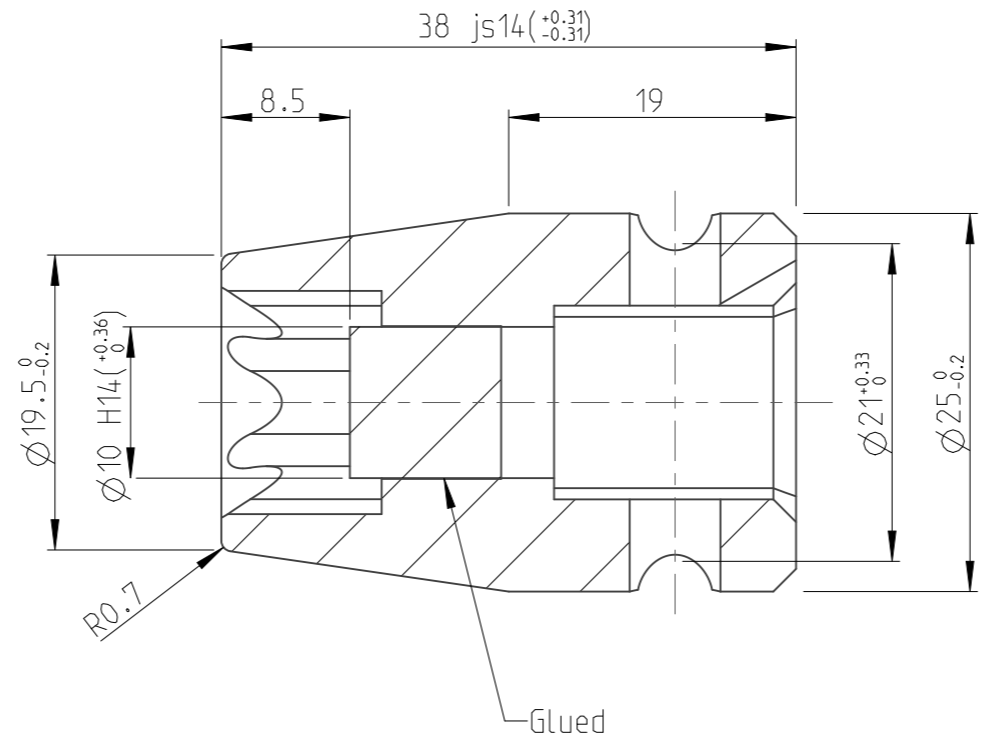
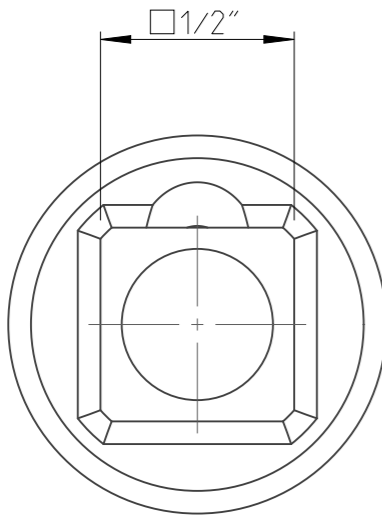


Model name	4027138016	Rev.Ver	1.2
Drawing name	4027138016	Rev.Ver	1.1



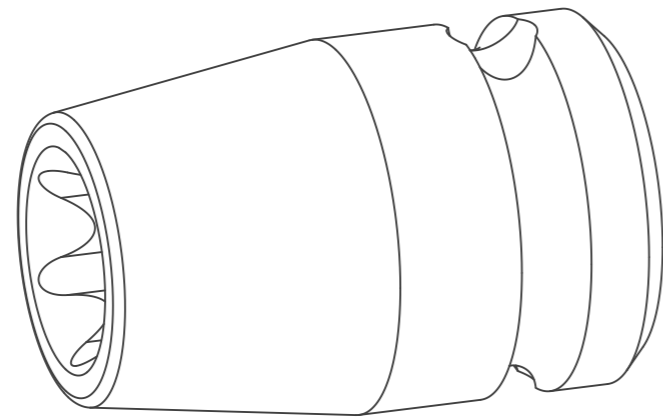
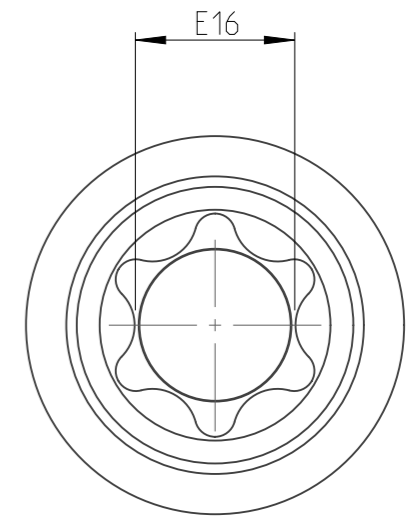
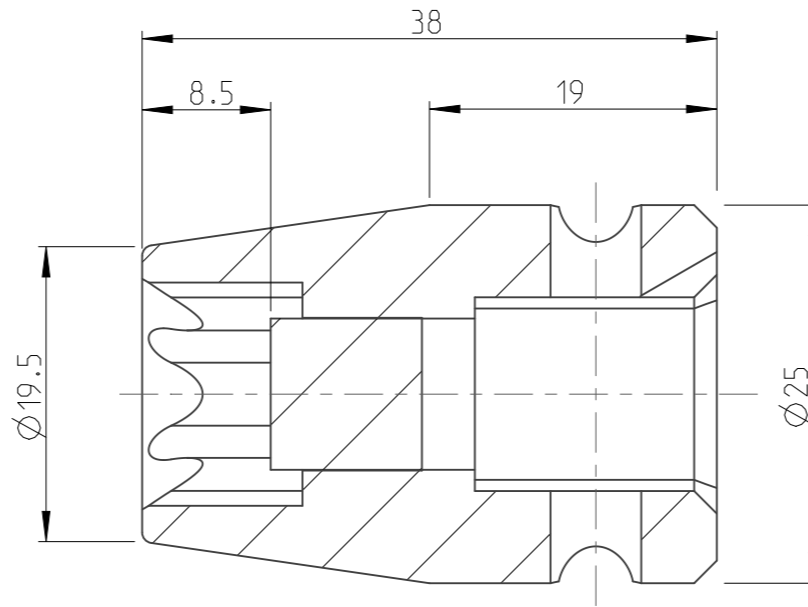
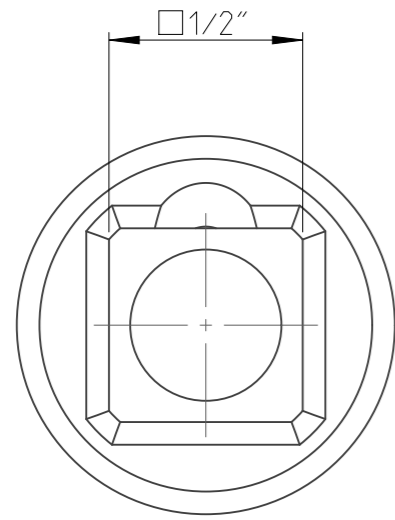
INPUT		OUTPUT	
Input name:	Input number:	Output name:	Output number:
Saltus-Female-SQ1/2	4027400012	Saltus-Female-TorxE16	4027460016

Tolerances, if not indicated, according to:	Machined Surfaces	Heat Treatment	Edges and corners	-	-
AC-STD	1350 K-mK	1240 K	1436 K	-	-
Name Socket-SQ1/2"-L38-E16-M				Secrecy class	
Material 0011 2541 03				1102 K/-	
46-48 HRC, Black oxidized				CAD Pro/E	
Scale 2:1		Format A3	Family -	Compare -	Drawing owner <b>DGA</b>
Drawn R Sandstrom		Blank -	Replaces -		
Transferred from -		Cons.class 1295 K/-	Rev 1	Status Released	Designation <b>4027 1380 16</b>
		Mass/Volume 85 g	Date 2023-05-23		

1	-	Drawing updated in Creo	2023-05-24	RoS
Note	Pos.	Modified from	Date	Intr.

This document and its content is the intellectual property of Atlas Copco Industrial Technique AB. Any use, including but not limited to reproduction, distribution, modification and copying without prior written authorization is strictly prohibited.

PART	4027138016	Status	Released	Rev./Iter	1.2
Drawing	4027138016	Status		Rev./Iter	1.1



proprietary document. Not to be used in any way without our consent.

**SALTUS**

Name	Socket-SQ1/2"-L38-E16-M
Designation	4027 1380 16